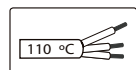


Attention: In case of a modular structure, a new electrical supply wire must be added every 25 meters of linear section and/or when the total power of the total linear section is above 1100W.



advice.

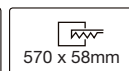


Do not accumulate excess of cable into the fixture.



Tc max=85°C
Risk group (EN 62471:2008)=1
Installation cable must support 110°C temperature. Feeding cable must be cable pipe 3x1 mm² and 3x1,5 mm². Installation may require

Attention: We do recommend being installed by two people for proper safety.



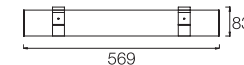
General safety instructions: information on restrictions related to use of the light fixtures (class, IP, etc), can be found both on the fixture label and on our website at www.rovasi.com.

The wiring schematics can be found on page 2 of the document.

ELECTRONIC EQUIPMENT:

S: On/Off .

D: DALI/DSI/switchDIM. There are accessories available for dimming devices.

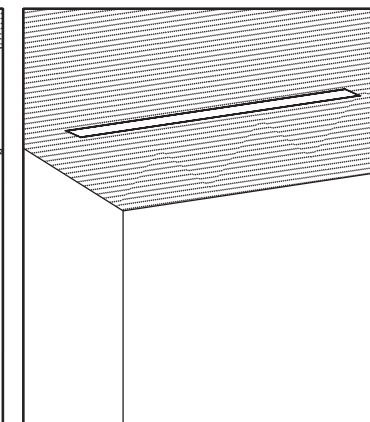
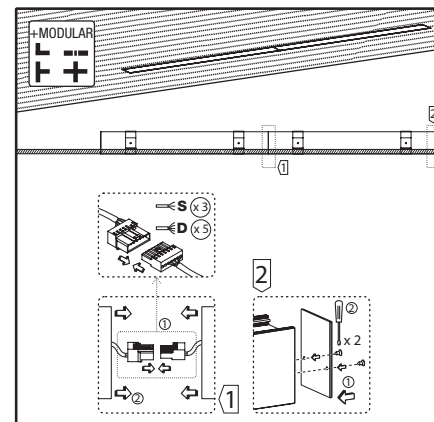
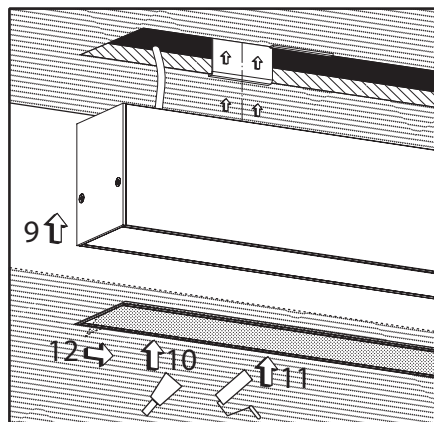
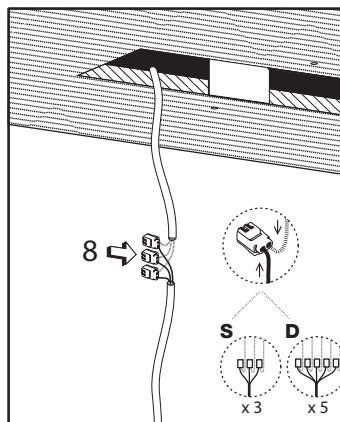
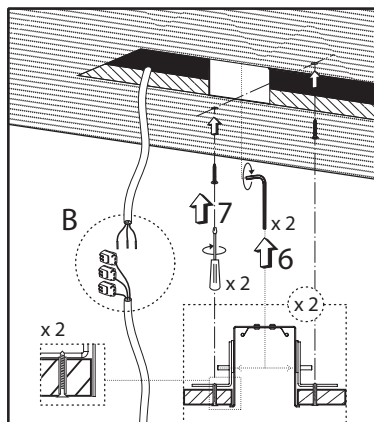


6W / 150mA

251RNA.1-I723
251RNA.1-I724
251RNA.1-I725
251RNA.1-I726
251RNA.1-I728
251RNA.1-I729

ACCESSORIES

+MODULAR	L mm	M5.P0055	M5.E0055
	569		
	849		
	1129		
	1409		
	2809		



LED technology and performance data are constantly changing. Current details should therefore be checked with ROVASI in order to ensure that its still the most up to date reference. Updated data will be supplied on request. [05.09.2022]

