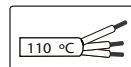


Fitting must only be used complete with their protection cover. Tempered safety glass or polycarbonate cover of dimensions 1121x52,5 mm and 4 mm thickness.



Installation cable must support 110°C temperature. Feeding cable must be cable pipe 3x1 mm². Installation may require advice.



Attention: We do recommend being installed by two people for proper safety.



General safety instructions: information on restrictions related to use of the light fixtures (class, IP, etc), can be found both on the fixture label and on our website at www.rovasi.com.

The wiring schematics can be found on page 2 of the document.

ELECTRONIC EQUIPMENT:

S: On/Off.

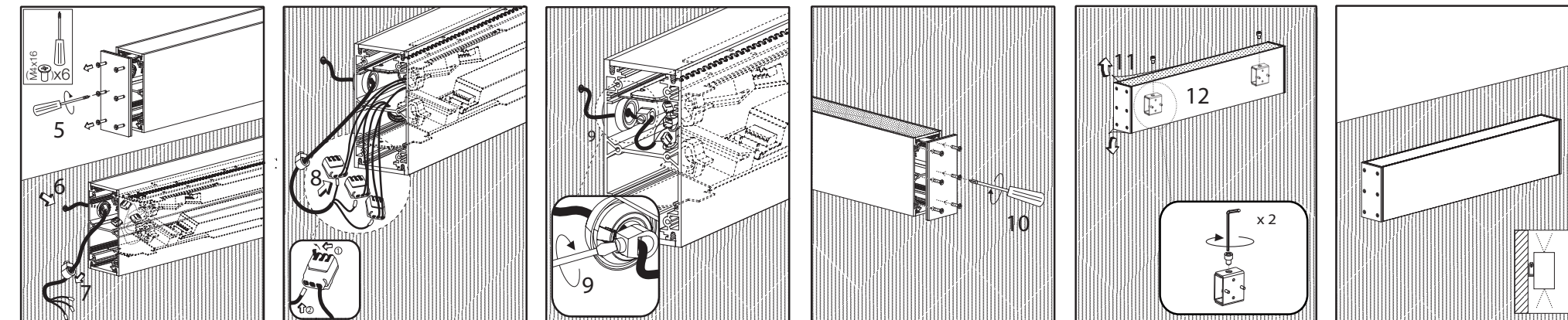
D: DALI/DSI/switchDIM.

A: 1-10V. There are accessories available for dimming devices.



28.42W / 150mA

755DST.4.01-I779
755DST.4.01-I780
755DST.4.01-I781
755DST.4.01-I782



This product contains a light source of energy efficiency class D.

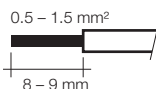
LED technology and performance data are constantly changing. Current details should therefore be checked with ROVASI in order to ensure that its still the most up to date reference. Updated data will be supplied on request. [18.07.2023]

WIRING GUIDELINES

Installation instructions. Mains supply wires

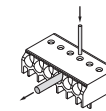
- Wiring type and cross section
- Solid wire with a cross section of 0.5 – 1.5 mm².
- Strip 8-9mm of insulation from the cables to ensure perfect operation of the push terminals.
- Use one wire for each terminal connector only.
- Use each strain relief channel for one cable only.
- Installation may require advice from a qualified person.
- Single lights apt for outer use.

Wire preparation:



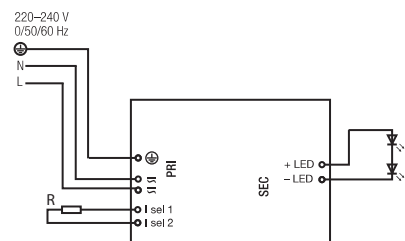
Wiring guidelines

- All connections must be kept as short as possible to ensure good EMI behaviour.
- Earthing is not required for the device to operate but will improve the EMI behaviour.
- The max. secondary cable length is 2m (4m circuit).
- Secondary switching is not permitted.
- Incorrect wiring can damage LED modules.

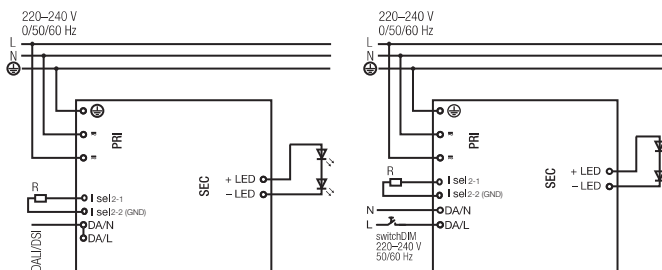


Loose wire through twisting and pulling or using a Ø1mm release tool.

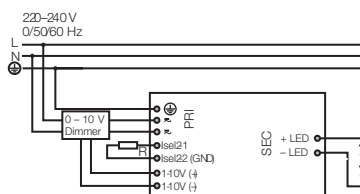
Circuit diagram S: Standard ON/OFF



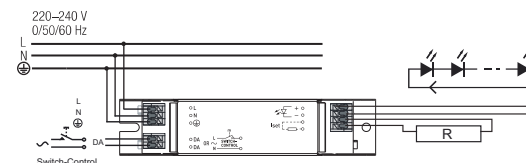
Circuit diagram D: DALI/DSI/SwitchDIM/corridorFUNCTION



Circuit diagram A: 1-10V [to consult]



Circuit diagram DB: DALI



UPGRADEABLE, REPLACEABLE, REPAIRABLE

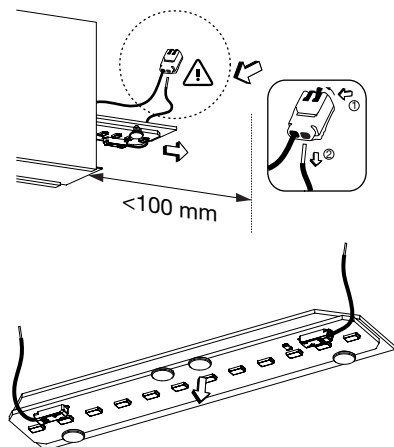


The light source contained in this luminaire shall only be replaced by the manufacturer or his service agent or a similar qualified person.



The driver contained in this luminaire shall only be replaced by the manufacturer or his service agent or a similar qualified person.

1



2



3

