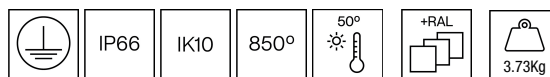


## 120CLT.4-I1190



Bollard with 360° light emission, radial beam.  
 Bollard head with a diameter of 140mm.  
 Bollard height : 300mm, customized height under request.  
 Protection rating against dust and moisture: IP66 – full protection.  
 Protection rating for resistance against harmful mechanical impacts: IK10.  
 Die-cast aluminium body and top cover made of die-cast aluminium and extruded aluminium tube coated with polyester powder along with C4 treatment for corrosion resistance to guarantee further durability.  
 Textured paint finish. Different RAL colour finishes available under request. C5-M special coating for highly corrosive environments is available under request.  
 7mm opal borosilicate glass.  
 Aluminium disks to get specific photometric results and to increase visual comfort.  
 A4 stainless steel locking screw. Optional supply of A2 stainless steel vandal-resistant screw.  
 Silicone gasket.  
 IP67 breathing valve to reduce condensation.  
 PCB on the top of the fixture.  
 Built-in driver included.  
 . Ambient temperature: up to 50°C.  
 Electronic options for light control : DALI-2 und Bluetooth.  
 The driver contained in this luminaire complies with European Directive 2009/125/EC establishing flicker limits: PstLM ≤ 1 and SVM ≤ 0.4.  
 Pre-wiring with 25cm of 3x1mm<sup>2</sup> cable.  
 Double cable gland entry for installation in series.  
 IP68 connector not included, it can be ordered separately: F3.A3. (On/Off) / F3.A5. (DALI-2).  
 Mounting base supplied with the fixture.  
 Accessory for installation in concrete reference F3.P1.BLD .  
 Sturdy base accessory to ensure high stability in public spaces F3.2.BLD.  
 Accessory for installation in grass reference F3.O1.BLD.

**Leuchten Lichtstrom:** 388lm  
**Leuchten Anschlussleistung:** 12.9 W  
**Leuchten Lichtausbeute:** 30 lm/W  
**Lichtquelle Lichtstrom:** 1553lm  
**Lichtquelle-Anschlussleistung:** 11.53 W  
**Konstantstromquelle:** 350 mA  
**Farbwiedergabeindex:** 90  
**Ähnlichste Farbtemperatu:** 2700K  
**Farbortoleranz:** MacAdam 3  
**Winkel:** 360°  
**LOR:** 25%

**Bemessene Lebensdauer der LEDs bei Ta = 25°C:** 72.000h L80B10

**Photobiologische Sicherheit Gruppe:** 1

**Dieses Produkt enthält eine Lichtquelle der Energieeffizienzklasse E**

### Elektronische Ausrüstung

**S:** On/Off (AC/DC, NOT looping through capable)

**D:** DALI-2/switchDIM/corridorFUNCTION

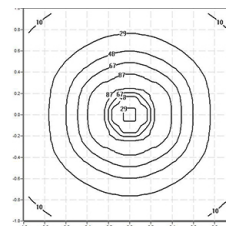
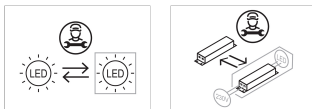
**B:** Bluetooth-Casambi [ 5m ]

\*Ein beliebiges vorgeanntes Suffix **-S**, **-D**, **-B** zur Referenz hinzufügen, um die gewünschte elektronische Ausrüstung anzugeben.

### Finishes

**1:** RAL9010: Reinweiß, **2:** RAL9005: Tiefschwarz, **4:** RAL7016: Anthrazitgrau, **7:** RAL9006: Weißaluminium, **80 Corten:**, **90:** RAL6005 Moogrün

### Aufrüstbar, austauschbar, reparierbar



### Anmerkung

Die LED-Technologie und Leistungsdaten sind einem ständigen Wandel unterworfen. Aktuelle Details müssen daher bei ROVASI nachgefragt werden, um sicherzustellen, dass die Daten aktuell sind. Aktualisierte Daten werden auf Anfrage bereitgestellt. [Letzte Revision 09.10.2025].

### 5 jahre garantie



BSI Cert ISO 9001:2015 - n°FM 39346

BSI Cert ISO 14001:2015 - n°EMS 554685

### ROVASI S.L.

Ronda de la Font Grossa, 15  
 Pol. Ind. La Gavarra  
 08540 Centelles | Barcelona  
 Spanien

### Kontakt

T. +34 93 881 35 12 info@rovasi.com  
 T. +34 93 881 37 13 [www.rovasi.com](http://www.rovasi.com)