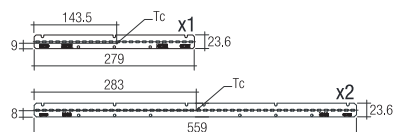


Attention: In case of a modular structure, a new electrical supply wire must be added every 25mts of linear section and/or when the total power of the whole linear section is above 1100W.



Tc max=85°C Risk group(EN 62471:2008)=1

Installation cable must support 110°C temperature. Feeding cable must be cable pipe 3x1 mm<sup>2</sup> and 3x1,5 mm<sup>2</sup>. Installation may require advice.

Do not accumulate excess of cable into the fixture.

Attention: We do recommend being installed by two people for proper safety.



General safety instructions: information on restrictions related to use of the light fixtures (class, IP, etc), can be found both on the fixture label and on our website at [www.rovasi.com](http://www.rovasi.com).

The wiring schematics can be found on page 2 of the document.

### ELECTRONIC EQUIPMENT:

**S:** On/Off.

**A:** 1-10V .

**D:** DALI/DSI/switchDIM.

**SE:** On/Off + Emergency Kit .

**AE:** 1-10V+Emergency Kit .

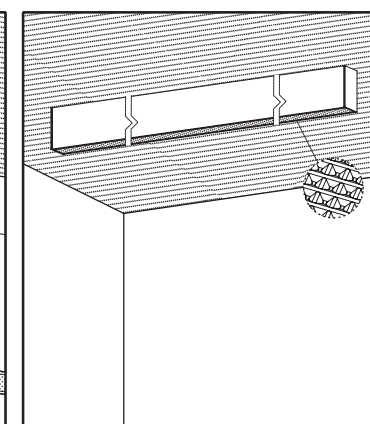
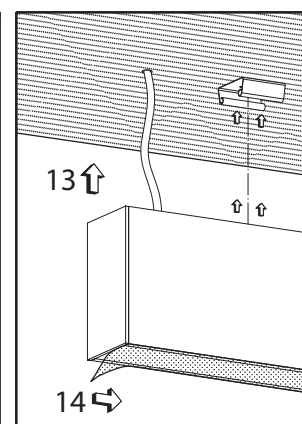
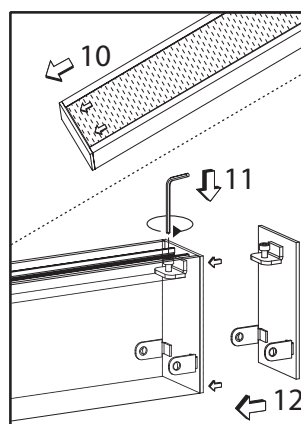
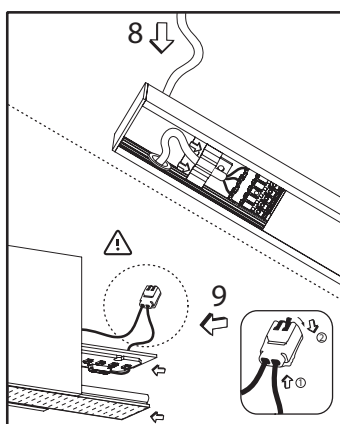
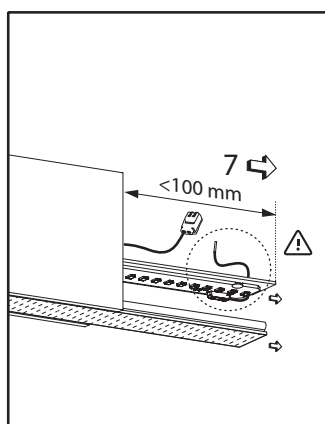
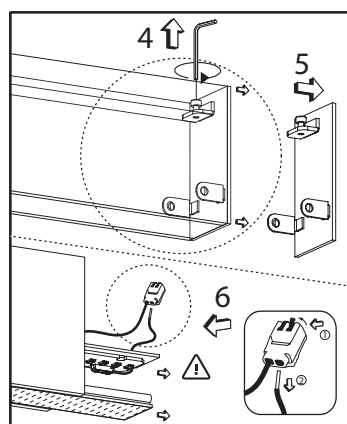
**DE:** DALI/DSI/switchDIM+E-Kit .

**DDE:** DALI/DSI/switchDIM+E-Kit (DALI). There are available accessories for dimming devices.



17.76W / 150mA

336KTA.1-I807  
336KTA.1-I808  
336KTA.1-I809  
336KTA.1-I810  
336KTA.1-I812  
336KTA.1-I813



This product contains a light source of energy efficiency class D + C.

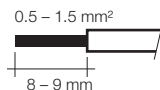
LED technology and performance data are constantly changing. Current details should therefore be checked with ROVASI in order to ensure that its still the mostup to date reference. Updated data will be supplied on request. [15.12.2022]

## WIRING GUIDELINES

### Installation instructions. Mains supply wires

- Wiring type and cross section
- Solid wire with a cross section of 0.5 – 1.5 mm<sup>2</sup>.
- Strip 8-9mm of insulation from the cables to ensure perfect operation of the push terminals.
- Use one wire for each terminal connector only.
- Use each strain relief channel for one cable only.
- Installation may require advice from a qualified person.
- Single lights apt for indoor use (not outdoor).

### Wire preparation:



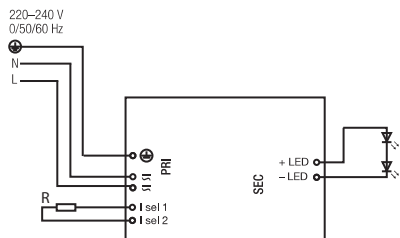
### Wiring guidelines

- All connections must be kept as short as possible to ensure good EMI behaviour.
- Earthing is not required for the device to operate but will improve the EMI behaviour.
- The max. secondary cable length is 2m (4m circuit).
- Secondary switching is not permitted.
- Incorrect wiring can damage LED modules.

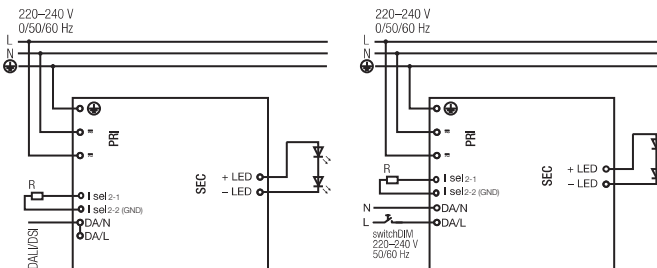


Loose wire through twisting and pulling or using a Ø1mm release tool.

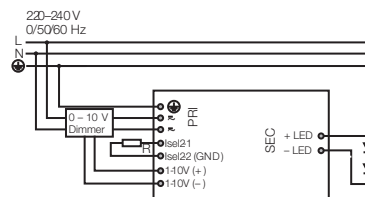
Circuit diagram S: Standard ON/OFF



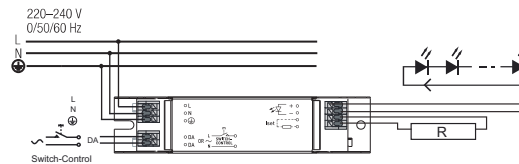
Circuit diagram D: DALI/DSI/SwitchDIM/corridorFUNCTION



Circuit diagram A: 1-10V [to consult]



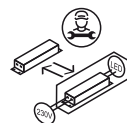
Circuit diagram DB: DALI



## UPGRADEABLE, REPLACEABLE, REPAIRABLE

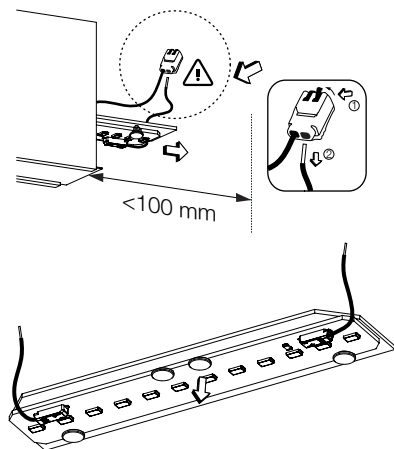


The light source in this luminaire should only be undertaken by the manufacturer or his service agent or a similar qualified person.

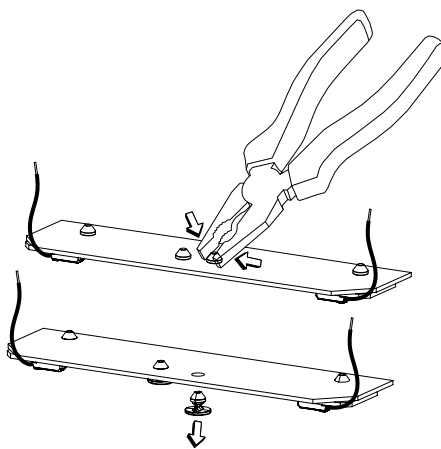


The servicing of the driver in this luminaire should only be undertaken by the manufacturer or his service agent or a similar qualified person.

1



2



3

