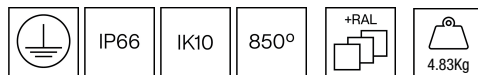


250CLT.4-I1173



Bollard with 360° light emission, radial beam.

Bollard head with a diameter of 140mm.

Bollard height : 416mm, customized height under request.

Protection rating against dust and moisture: IP66 – full protection.

Protection rating for resistance against harmful mechanical impacts: IK10.

Die-cast aluminium body and top cover made of die-cast aluminium and extruded aluminium tube coated with polyester powder along with C4 treatment for corrosion resistance to guarantee further durability.

Textured paint finish. Different RAL colour finishes available under request. C5-M special coating for highly corrosive environments is available under request. 5mm extruded polycarbonate diffuser made by resins UV stabilized. Opal finish.

Aluminium disks to get specific photometric results and to increase visual comfort.

A4 stainless steel locking screw. Optional supply of A2 stainless steel vandal-resistant screw.

Silicone gasket.

IP67 breathing valve to reduce condensation.

PCB on the top of the fixture.

Built-in driver included.

Electronic options for light control : DALI-2 und Bluetooth.

The driver contained in this luminaire complies with European Directive 2009/125/EC establishing flicker limits: PstLM ≤ 1 and SVM ≤ 0.4.

Pre-wiring with 25cm of 3x1mm² cable.

Double cable gland entry for installation in series.

IP68 connector not included, it can be ordered separately: F3.A3 (On/Off) / F3.A5 (DALI-2) Mounting base supplied with the fixture.

Accessory for installation in concrete reference F3.P1.BLD

Accessory for installation in grass reference F3.O1.BLD

Leuchten Lichtstrom: 161lm

Leuchten Anschlussleistung: 7 W

Leuchten Lichtausbeute: 23 lm/W

Lichtquelle Lichtstrom: 1074lm

Lichtquelle-Anschlussleistung: 7 W

Konstantstromquelle: 350 mA

Farbwiedergabeindex: 55

Ähnlichste Farbtemperatu: 1795K

Farborttoleranz: MacAdam 4

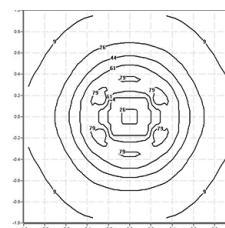
Winkel: 360°

LOR: 15%

Bemessene Lebensdauer der LEDs bei Ta = 25°C: 52000h L80B50

Photobiologische Sicherheit Gruppe: 1

Dieses Produkt enthält eine Lichtquelle der Energieeffizienzklasse consult



Elektronische Ausrüstung

S: On/Off (AC/DC, NOT looping through capable)

D: DALI-2/switchDIM/corridorFUNCTION

B: Bluetooth-Casambi [5m]

*Ein beliebiges vorgenanntes Suffix **-S**, **-D**, **-B** zur Referenz hinzufügen, um die gewünschte elektronische Ausrüstung anzugeben.

Finishes

1: RAL9010: Reinweiß, **2:** RAL9005: Tiefschwarz, **4:** RAL7016: Anthrazitgrau, **7:** RAL9006: Weißaluminium, **80 Corten:**, **90:** RAL6005 Moogrün

Aufrüstbar, austauschbar, reparierbar



Anmerkung

Die LED-Technologie und Leistungsdaten sind einem ständigen Wandel unterworfen. Aktuelle Details müssen daher bei ROVASI nachgefragt werden, um sicherzustellen, dass die Daten aktuell sind. Aktualisierte Daten werden auf Anfrage bereitgestellt. [Letzte Revision 18.10.2025].

5 jahre garantie



BSI Cert ISO 9001:2015 - n°FM 39346

BSI Cert ISO 14001:2015 - n°EMS 554685

ROVASI S.L.

Ronda de la Font Grossa, 15
Pol. Ind. La Gavarra
08540 Centelles | Barcelona
Spanien

Kontakt

T. +34 93 881 35 12 info@rovasi.com
T. +34 93 881 37 13 www.rovasi.com