

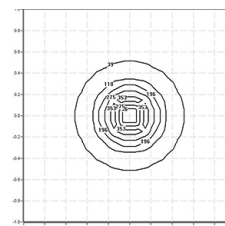


## 220CLX.4-I1203



Bollard with 360° light emission, radial beam.  
 Bollard head with a diameter of 110mm.  
 Bollard height : 300mm, customized height under request.  
 Protection rating against dust and moisture: IP66 – full protection.  
 Protection rating for resistance against harmful mechanical impacts: IK10.  
 Die-cast aluminium body and top cover made of die-cast aluminium and extruded aluminium tube coated with polyester powder along with C4 treatment for corrosion resistance to guarantee further durability.  
 Textured paint finish. Different RAL colour finishes available under request. C5-M special coating for highly corrosive environments is available under request.  
 7mm opal borosilicate glass.  
 Aluminium disks to get specific photometric results and to increase visual comfort.  
 A4 stainless steel locking screw. Optional supply of A2 stainless steel vandal-resistant screw.  
 Silicone gasket.  
 IP67 venting valve to reduce condensation.  
 PCB on the top of the fixture.  
 Built-in driver included.  
 Electronic options for light control : DALI-2 or Bluetooth.  
 The driver contained in this luminaire complies with European Directive 2009/125/EC establishing flicker limits: PstLM ≤ 1 and SVM ≤ 0,4.  
 Luminaire designed according to ecodesign principles, with replaceable light source and driver, to enable upgrades, ease maintenance and extend the product lifecycle.  
 Pre-wiring with 25cm of 3x1mm2 cable.  
 Double cable gland entry for installation in series.  
 IP68 connector not included, it can be ordered separately: F3.A3. (On/Off) / F3.A5. (DALI-2).  
 Mounting base supplied with the fixture.  
 Accessory for installation in concrete reference F3.P1.BLX .  
 Sturdy base accessory to ensure high stability in public spaces F3.2.BLX.  
 Accessory for installation in grass reference F3.O1.BLX.

**Luminaire luminous flux:** 193lm  
**Luminaire connected power:** 9.18 W  
**Luminaire efficiency:** 21 lm/W  
**Light source luminous flux:** 1380lm  
**Light source power:** 8.27 W  
**Constant Current:** 250 mA  
**CRI:** 80  
**Colour Temperature:** 3000K  
**Chromaticity Tolerance:** MacAdam 3  
**Beam Angle:** 360°  
**LOR:** 14%  
**LED reliability at nominal Ta = 25°C:** 72.000h L80B10  
**Photobiological safety group:** 1  
**This product contains a light source of energy efficiency class C**



### Electronic Equipment

**S:** On/Off (AC/DC, NOT looping through capable)  
**D:** DALI-2/switchDIM/corridorFUNCTION  
**B:** Bluetooth-Casambi [ 5m ]

\*Add the suffix **-S, -D, -B** after the reference to indicate your electronic equipment choice.

### Finishes

**1:** RAL9010: Pure White textured, **2:** RAL9005: Jet Black textured, **4:** RAL7016: Anthracite Grey textured, **7:** RAL9006: White Aluminium textured, **80 Corten:**, **90:** RAL6005 Moss Green textured

### Upgradeable, Replaceable, Repairable



### Note

LED technology and performance data are constantly changing. Current details should therefore be checked with ROVASI in order to ensure that it is still the most up to date reference. Updated data will be supplied on request. [Last revised on 11.01.2026]

### 5 years guarantee



BSI Cert ISO 9001:2015 - n°FM 39346  
 BSI Cert ISO 14001:2015 - n°EMS 554685

### ROVASI S.L.

Ronda de la Font Grossa, 15  
 Pol. Ind. La Gavarra  
 08540 Centelles | Barcelona  
 Spain

### Contact

T. +34 93 881 35 12 info@rovasi.com  
 T. +34 93 881 37 13 **www.rovasi.com**