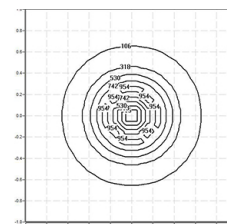


120GNS.4-I1188



Bollard with 360° light emission, radial beam.
Bollard head with a diameter of 140mm.
Bollard height : 300mm, customized height under request.
Protection rating against dust and moisture: IP66 – full protection.
Protection rating for resistance against harmful mechanical impacts: IK06.
Die-cast aluminium body and top cover made of die-cast aluminium and extruded aluminium tube coated with polyester powder along with C4 treatment for corrosion resistance to guarantee further durability.
Textured paint finish. Different RAL colour finishes available under request. C5-M special coating for highly corrosive environments is available under request.
7mm opal borosilicate glass.
White painted interior reflector to control the light and to create specific results.
A4 stainless steel locking screw. Optional supply of A2 stainless steel vandal-resistant screw.
Silicone gasket.
IP67 venting valve to reduce condensation.
PCB on the top of the fixture.
Built-in driver included. Ambient temperature: up to 50°C.
Electronic options for light control : DALI-2 or Bluetooth.
The driver contained in this luminaire complies with European Directive 2009/125/EC establishing flicker limits: $PstLM \leq 1$ and $SVM \leq 0.4$.
Pre-wiring with 25cm of 3x1mm² cable.
Double cable gland entry for installation in series.
IP68 connector not included, it can be ordered separately: F3.A3. (On/Off) / F3.A5. (DALI-2).
Mounting base supplied with the fixture.
Accessory for installation in concrete reference F3.P1.BLD .
Sturdy base accessory to ensure high stability in public spaces F3.2.BLD.
Accessory for installation in grass reference F3.O1.BLD.

Luminaire luminous flux: 764lm
Luminaire connected power: 7.15 W
Luminaire efficiency: 107 lm/W
Light source luminous flux: 1158lm
Light source power: 6.44 W
Constant Current: 200 mA
CRI: 80
Colour Temperature: 3000K
Chromaticity Tolerance: MacAdam 3
Beam Angle: 360°
LOR: 66%
LED reliability at nominal Ta = 25°C: 72.000h L80B10
Photobiological safety group: 1
This product contains a light source of energy efficiency class C



Electronic Equipment

S: On/Off (AC/DC, NOT looping through capable)
D: DALI-2/switchDIM/corridorFUNCTION
B: Bluetooth-Casambi [5m]

*Add the suffix **-S, -D, -B** after the reference to indicate your electronic equipment choice.

Finishes

1: RAL9010: Pure White textured, **2:** RAL9005: Jet Black textured, **4:** RAL7016: Anthracite Grey textured, **7:** RAL9006: White Aluminium textured, **80 Corten:**, **90:** RAL6005 Moss Green textured

Upgradeable, Replaceable, Repairable



Note

LED technology and performance data are constantly changing. Current details should therefore be checked with ROVASI in order to ensure that it is still the most up to date reference. Updated data will be supplied on request. [Last revised on 05.11.2025]

5 years guarantee



BSI Cert ISO 9001:2015 - n°FM 39346
BSI Cert ISO 14001:2015 - n°EMS 554685

ROVASI S.L.

Ronda de la Font Grossa, 15
Pol. Ind. La Gavarra
08540 Centelles | Barcelona
Spain

Contact

T. +34 93 881 35 12 info@rovasi.com
T. +34 93 881 37 13 www.rovasi.com