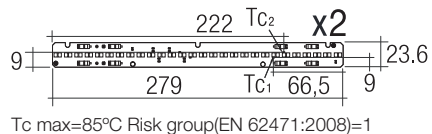


Attention: In case of a modular structure, a new electrical supply wire must be added every 25mts of linear section and/or when the total power of the whole linear section is above 1100W.



Installation cable must support 110°C temperature. Feeding cable must be cable pipe 3x1 mm² and 3x1,5 mm². Installation may require advice.

Do not accumulate excess of cable into the fixture.

Attention: We do recommend being installed by two people for proper safety.

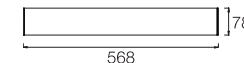


General safety instructions: information on restrictions related to use of the light fixtures (class, IP, etc), can be found both on the fixture label and on our website at www.rovasi.com.

The wiring schematics can be found on page 2 of the document.

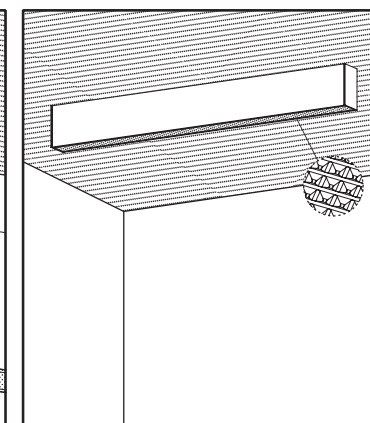
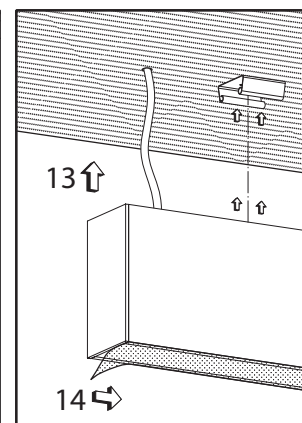
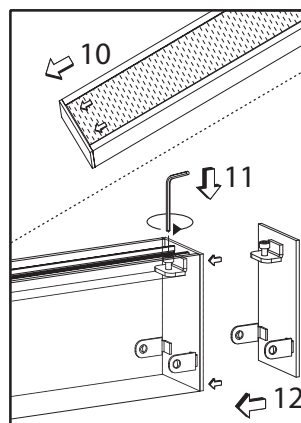
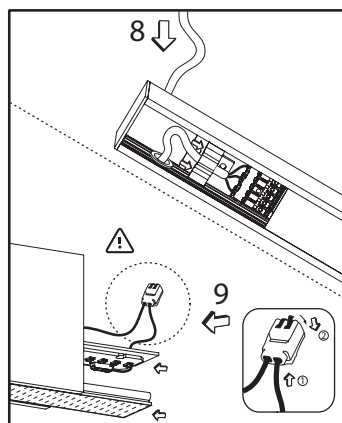
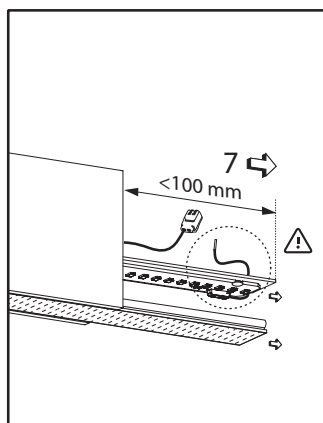
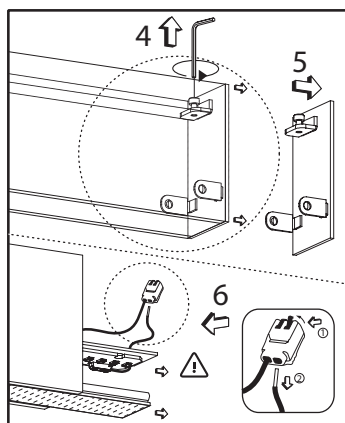
ELECTRONIC EQUIPMENT:

T: SwitchDIM/ColourSwitch/DALI/DSI. There are available accessories for dimming devices.



27.7W / mA

391KTA.1-I677



This product contains a light source of energy efficiency class F.

LED technology and performance data are constantly changing. Current details should therefore be checked with ROVASI in order to ensure that its still the mostup to date reference. Updated data will be supplied on request. [20.11.2023]



BSI Cert ISO 9001:2015 - n°FM 39346
BSI Cert ISO 14001:2015 - n°EMS 554685

Ronda de la Font-Grossa 15
Pol. Ind. La Gavarra
08540 Centelles | Barcelona
Spain

T. 34 93 881 35 12
T. 34 93 881 37 13

info@rovasi.com
rovasi.com

WIRING GUIDELINES

- Installation instructions. Mains supply wires**
- Wiring type and cross section
 - Use one wire for each terminal connector only.
 - Use each strain relief channel for one cable only.
 - Installation may require advice from a qualified person.
 - Single lights apt for inner use (no outer)

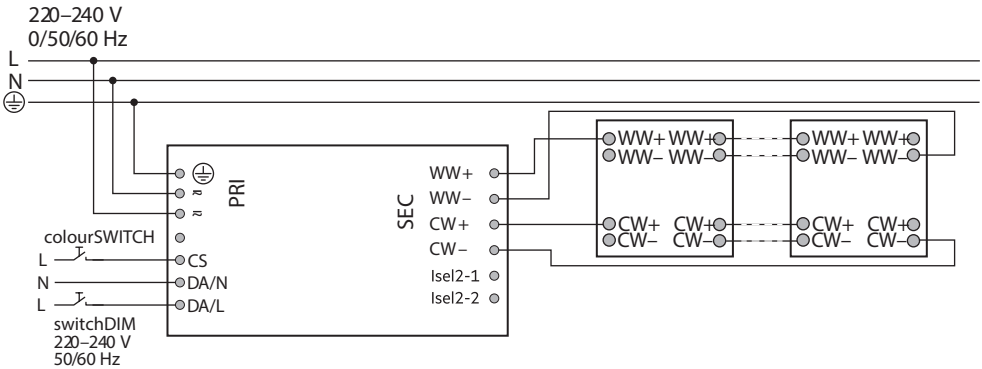
- Wiring guidelines**
- The cables should be run separately from the mains connections and mains cables to ensure good EMC .
 - The LED wiring should be kept as short as possible to ensure good EMC.
 - The max. secondary cable length is 2m (4m circuit).
 - Secondary switching is not permitted.
 - Incorrect wiring can damage LED modules.

Loose wire through twisting and pulling or using a Ø1mm release tool.



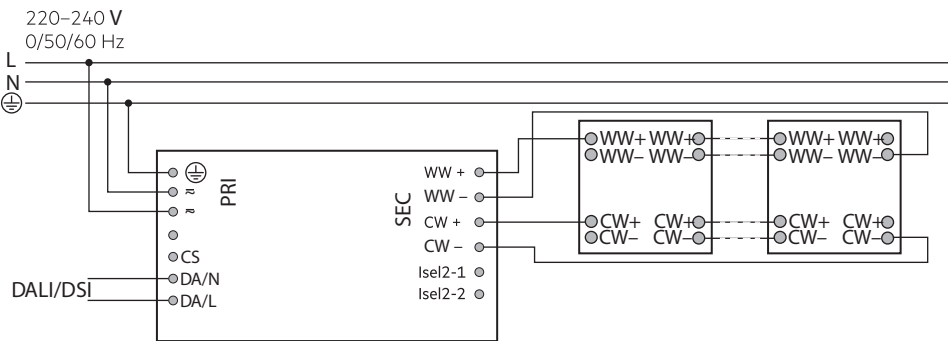
T: switchDIM and colourSWITCH

Wiring diagram for switchDIM and colourSWITCH for LLE Premium

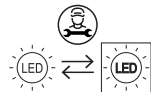


T: DALI/DSI

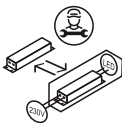
Wiring diagram for DALI/DSI for LLE Premium



UPGRADEABLE, EPLACEABLE, REPAIRABLE



The light source n this luminaire should only be undertaken by the manufacturer or his service agent or a similar qualified person.



The servicing of the driver in this luminaire should only be undertaken by the manufacturer or his service agent or a similar qualified person.

