



101BLT.4-I1189



Semi-recessed buried fixture with 360° light emission, radial beam to achieve an effective ground illumination.

Circular design available in a diameter of 140mm.

Protection rating against dust and moisture: complete IP67.

Protection rating for resistance to harmful mechanical impacts: IK10.

Robust and corrosion-resistant because of its black painted die-cast aluminium housing with C5-M special coating for environments with very high corrosivity.

Cover made of die-cast aluminium treated against corrosion and coated with polyester powder available in several colour finishes, customized RAL under request.

5mm extruded polycarbonate diffuser made by resins UV stabilized. Opal finish.

Temperature resistant silicone rubber gasket.

Built-in driver, included. Ambient temperature up to 50°C.

Electronic standard options for lighting control: DALI-2.

The driver contained in this luminaire complies with European Directive 2009/125/EC establishing flicker limits: PstLM ≤ 1 and SVM ≤ 0.4.

Passive temperature management: heat dissipation flows through the fixture body itself.

Supplied with aluminium insertion tube as standard.

Ground mounted by two fixing holes.

Pre-wiring of 0.5 metres cable 3x1mm².

IP68 connector not included, it can be ordered separately: F3.A3. (On/Off) / F3.A5. (DALI).

Luminaire luminous flux: 80lm

Luminaire connected power: 7.15 W

Luminaire efficiency: 11 lm/W

Light source luminous flux: 1215lm

Light source power: 6.44 W

Constant Current: 200 mA

CRI: 80

Colour Temperature: 4000K

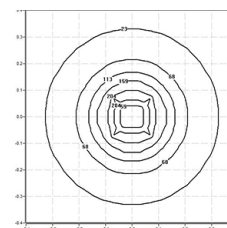
Chromaticity Tolerance: MacAdam 3

LOR: 6.6%

LED reliability at nominal Ta = 25°C: 72.000h L80B10

Photobiological safety group: 1

This product contains a light source of energy efficiency class C

**Electronic Equipment**

S: On/Off (AC/DC)

D: DALI-2/switchDIM/corridorFUNCTION

B: Bluetooth-Casambi [5m]

*Add the suffix **-S**, **-D**, **-B** after the reference to indicate your electronic equipment choice.

Finishes

1: RAL9010: Pure White textured, **2:** RAL9005: Jet Black textured, **4:** RAL7016: Anthracite Grey textured, **7:** RAL9006: White Aluminium textured, **80 Corten:**, **90:** RAL6005 Moss Green textured

Upgradeable, Replaceable, Repairable

Note

LED technology and performance data are constantly changing. Current details should therefore be checked with ROVASI in order to ensure that it is still the most up to date reference. Updated data will be supplied on request. [Last revised on 15.06.2025]

5 years guarantee

BSI Cert ISO 9001:2015 - n°FM 39346

BSI Cert ISO 14001:2015 - n°EMS 554685

ROVASI S.L.

Ronda de la Font Grossa, 15
Pol. Ind. La Gavarra
08540 Centelles | Barcelona
Spain

Contact

T. +34 93 881 35 12 info@rovasi.com
T. +34 93 881 37 13 **www.rovasi.com**