
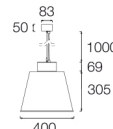
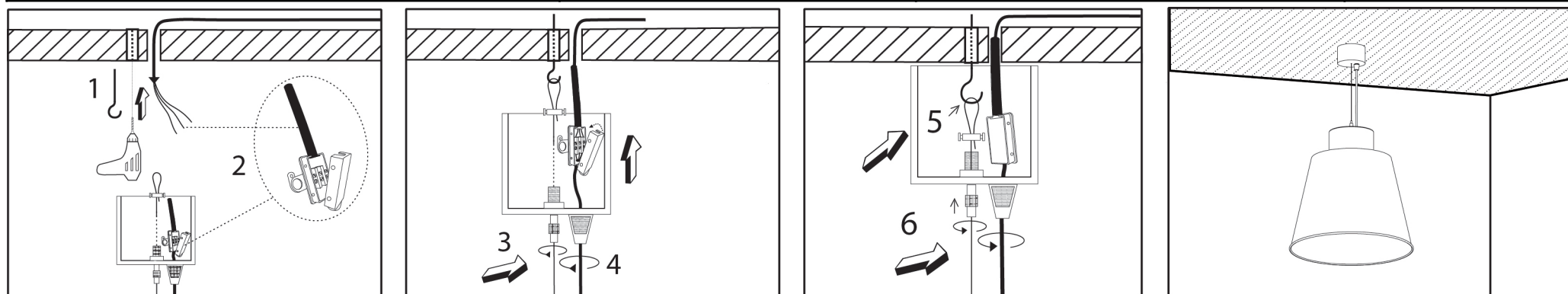
 <p>The length of the standard cable and steel cords (1,000 mm) may be adjusted to the current project.</p>	<p>Tc max=°C Risk group(EN 62471:2008)=</p> 	<p>General safety instructions: information on restrictions related to use of the light fixtures (class, IP, etc), can be found both on the fixture label and on our website at www.rovasi.com</p> <p>The wiring schematics can be found on page 2 of the document.</p> <p>ELECTRONIC EQUIPMENT:</p> <p>:</p>	 <p>Max 15W / 0mA 430ALN.01.00</p>
--	---	--	---



This product contains a light source of energy efficiency class Retrofit.

LED technology and performance data are constantly changing. Current details should therefore be checked with ROVASI in order to ensure that its still the mostup to date reference. Updated data will be supplied on request. [08.10.2025]



BSI Cert ISO 9001:2015 - n°FM 39346
BSI Cert ISO 14001:2015 - n°EMS 554685

Ronda de la Font-Grossa 15
Pol. Ind. La Gavarra
08540 Centelles | Barcelona
Spain

T. +34 93 881 35 12
T. +34 93 881 37 13

info@rovasi.com
rovasi.com