



320KRM.4-I1466



Bollard with two sides light emission, symmetrical distribution.

Bollard height 675mm.

Protection rating against dust and moisture: IP66 – full protection.

Protection rating for resistance against harmful mechanical impacts: IK10.

Extruded aluminium profile coated with polyester powder along with C4 treatment for corrosion resistance to guarantee further durability. Textured paint finish. Different RAL colour finishes available under request. C5-M special coating for highly corrosive environments is available under request.

4mm frontal polycarbonate diffuser.

Interior opal diffuser.

IP67 venting valve to reduce condensation.

Silicone gasket.

Highly efficient linear printed circuit board.

Built-in driver included. Ambient temperature: up to 50°C.

Electronic options for light control: DALI-2 or Bluetooth.

The driver contained in this luminaire complies with European Directive 2009/125/EC establishing flicker limits: PstLM ≤ 1 and SVM ≤ 0,4.

Luminaire designed according to ecodesign principles, with replaceable light source and driver, to enable upgrades, ease maintenance and extend the product lifecycle.

A4 stainless steel locking screw. Optional supply of A2 stainless steel vandal-resistant screws.

IP68 connector not included, it can be ordered separately: F3.A3 (On/Off) / F3.A5 (DALI).

Pre-wiring of 35cm cable 3x1mm².

Mounting plate for floor installation supplied with the fixture.

Accessory for concrete installation reference F3.P2.KRM.

Accessory for grass installation reference F3.O2.KRM.

Luminaire luminous flux: 2x2lm

Luminaire connected power: 2x12,02 W

Luminaire efficiency: 79 lm/W

Light source luminous flux: 2x2100lm

Light source power: 2x10,82 W

Constant Current: 250 mA

CRI: >80

Colour Temperature: 5000K

Chromaticity Tolerance: MacAdam 3

Beam Angle: 91°

LOR: 45%

LED reliability at nominal Ta = 25°C: 100.000h L80B10

Photobiological safety group: 0

This product contains a light source of energy efficiency class B

Electronic Equipment

S: On/Off (AC/DC, NOT looping through capable)

D: DALI-2/switchDIM/corridorFUNCTION

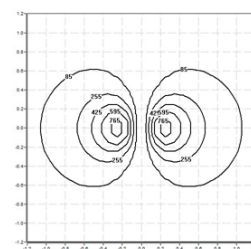
B: Bluetooth-Casambi [15m]

*Add the suffix **-S**, **-D**, **-B** after the reference to indicate your electronic equipment choice.

Finishes

1: RAL9010: Pure White textured, **2:** RAL9005: Jet Black textured, **4:** RAL7016: Anthracite Grey textured, **7:** RAL9006: White Aluminium textured, **80 Corten**, **90:** RAL6005 Moss Green textured

Upgradeable, Replaceable, Repairable



Note

LED technology and performance data are constantly changing. Current details should therefore be checked with ROVASI in order to ensure that it is still the most up to date reference. Updated data will be supplied on request. [Last revised on 17.12.2025]

5 years guarantee



BSI Cert ISO 9001:2015 - n°FM 39346

BSI Cert ISO 14001:2015 - n°EMS 554685

ROVASI S.L.

Ronda de la Font Grossa, 15
Pol. Ind. La Gavarra
08540 Centelles | Barcelona
Spain

Contact

T. +34 93 881 35 12
T. +34 93 881 37 13

info@rovasi.com

www.rovasi.com