



320KXS.4-I1400



Two-sided emission bollard, symmetrical distribution.

Bollard height 255mm.

Protection rating against dust and moisture: complete IP66.

Protection rating for resistance to harmful mechanical impacts: IK10.

Extruded aluminium profile coated with polyester powder along with C4 treatment for corrosion resistance to guarantee further durability. Textured paint finish. Different RAL colour finishes available under request. C5-M special coating for highly corrosive environments is available under request.

A4 stainless steel locking screw. Optional A2 stainless steel vandal-proof screw.

Highly efficient linear printed circuit board.

Protection polycarbonate diffuser in 4mm.

Interior opal diffuser.

Silicone gasket.

Built-in driver, included. Ambient temperature: up to 50°C.

The driver contained in this luminaire complies with European Directive 2009/125/EC establishing flicker limits: PstLM ≤ 1 and SVM ≤ 0,4.

Luminaire designed according to ecodesign principles, with replaceable light source and driver, to enable upgrades, ease maintenance and extend the product lifecycle.

IP67 venting valve to reduce condensation.

IP68 connector not included, it can be ordered separately: F3.A3.

Pre-wiring of 35cm cable 3x1mm².

Mounting plate for floor installation supplied with the fixture.

Accessory for concrete installation reference F3.P2.KRM.

Accessory for grass installation reference F3.P2.KRM.

Luminaire luminous flux: 2x2lm

Luminaire connected power: 2x4,1 W

Luminaire efficiency: 33 lm/W

Light source luminous flux: 2x305lm

Light source power: 2x1,6 W

Constant Current: 150 mA

CRI: >80

Colour Temperature: 2700K

Chromaticity Tolerance: MacAdam 3

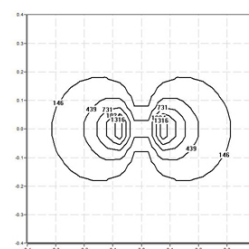
Beam Angle: 91°

LOR: 45%

LED reliability at nominal Ta = 25°C: 100.000h L80B10

Photobiological safety group: 0

This product contains a light source of energy efficiency class C



Electronic Equipment

S: On/Off

D: DALI-2/switchDIM

*Add the suffix **-S**, **-D** after the reference to indicate your electronic equipment choice.

Finishes

1: RAL9010: Pure White textured, **2:** RAL9005: Jet Black textured, **4:** RAL7016: Anthracite Grey textured, **7:** RAL9006: White Aluminium textured, **80 Corten**, **90:** RAL6005 Moss Green textured

Upgradeable, Replaceable, Repairable



Note

LED technology and performance data are constantly changing. Current details should therefore be checked with ROVASI in order to ensure that it is still the most up to date reference. Updated data will be supplied on request. [Last revised on 17.12.2025]

5 years guarantee



BSI Cert ISO 9001:2015 - n°FM 39346

BSI Cert ISO 14001:2015 - n°EMS 554685

ROVASI S.L.

Ronda de la Font Grossa, 15
Pol. Ind. La Gavarra
08540 Centelles | Barcelona
Spain

Contact

T. +34 93 881 35 12 info@rovasi.com
T. +34 93 881 37 13 www.rovasi.com