

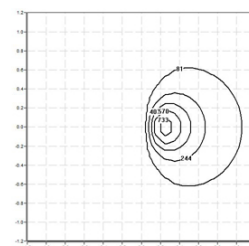


## 420FKL.4-I1464



Wall-mounted fixture with symmetrical light distribution.  
 Luminaire height 764mm with 30° inclination from the vertical axis.  
 Protection rating against dust and moisture: IP66 – full protection.  
 Protection rating for resistance against harmful mechanical impacts: IK10.  
 Extruded aluminium profile coated with polyester powder along with C4 treatment for corrosion resistance to guarantee further durability. Textured paint finish. Different RAL colour finishes available under request. C5-M special coating for highly corrosive environments is available under request.  
 4mm frontal polycarbonate diffuser.  
 Interior opal diffuser.  
 IP67 venting valve to reduce condensation.  
 Silicone gasket.  
 Highly efficient linear printed circuit board.  
 Built-in driver included. Ambient temperature: up to 50°C.  
 Electronic options for light control: DALI-2.  
 The driver contained in this luminaire complies with European Directive 2009/125/EC establishing flicker limits: PstLM ≤ 1 and SVM ≤ 0.4.  
 A4 stainless steel locking screw. Optional supply of A2 stainless steel vandal-resistant screws.  
 IP68 connector not included, it can be ordered separately: F3.A3 (On/Off) / F3.A5 (DALI).  
 Mounting plate for wall installation supplied with the fixture.  
 Pre-wiring of 35cm cable 3x1mm<sup>2</sup>.

**Luminaire luminous flux:** 898lm  
**Luminaire connected power:** 12,02 W  
**Luminaire efficiency:** 75 lm/W  
**Light source luminous flux:** 1995lm  
**Light source power:** 10,82 W  
**Constant Current:** 250 mA  
**CRI:** >80  
**Colour Temperature:** 3000K  
**Chromaticity Tolerance:** MacAdam 3  
**Beam Angle:** 91°  
**LOR:** 45%  
**LED reliability at nominal Ta = 25°C:** 100.000h L80B10  
**Photobiological safety group:** 0  
**This product contains a light source of energy efficiency class C**



### Electronic Equipment

**S:** On/Off (AC/DC, NOT looping through capable)  
**D:** DALI-2/switchDIM/corridorFUNCTION  
**B:** Bluetooth-Casambi [ 15m ]

\*Add the suffix **-S**, **-D**, **-B** after the reference to indicate your electronic equipment choice.

### Finishes

**1:** RAL9010: Pure White textured, **2:** RAL9005: Jet Black textured, **4:** RAL7016: Anthracite Grey textured, **7:** RAL9006: White Aluminium textured, **80 Corten:**, **90:** RAL6005 Moss Green textured

### Upgradeable, Replaceable, Repairable



### Note

LED technology and performance data are constantly changing. Current details should therefore be checked with ROVASI in order to ensure that it is still the most up to date reference. Updated data will be supplied on request. [Last revised on 16.08.2025]

### 5 years guarantee



BSI Cert ISO 9001:2015 - n°FM 39346  
 BSI Cert ISO 14001:2015 - n°EMS 554685

### ROVASI S.L.

Ronda de la Font Grossa, 15  
 Pol. Ind. La Gavarra  
 08540 Centelles | Barcelona  
 Spain

### Contact

T. +34 93 881 35 12 info@rovasi.com  
 T. +34 93 881 37 13 [www.rovasi.com](http://www.rovasi.com)