

106PVT.4-I2135



Semi-recessed buried fixtures with grazing light distribution to achieve an effective inground illumination. Circular design in diameter 235mm.

IP68 protection rating that enables it to resist immersion to a depth of 1m.

Protection rating of resistance to harmful mechanical impacts: IK10.

Load supported: 6.000Kg. It can be driven over by vehicles with pneumatic tyres.

Robust and corrosion-resistant black painted aluminium housing with C5-M special coating for environments with very high corrosivity.

Cover made of die cast aluminium coated with polyester powder along with C4 treatment for corrosion resistance to guarantee further durability. Textured paint finish. Different RAL colour finishes available under request. C5-M special coating for highly corrosive environments is available under request.

2 light sectors 65°.

Sandblasted metalized aluminium reflector.

Temperature resistant silicone rubber gasket.

A4 stainless steel locking screw. Optional supply of A2 stainless steel vandal-resistant screws [reference F2.A0235+F2.A1].

Built-in driver, included. Electronic options for lighting control: DALI-2.

The driver contained in this luminaire complies with European Directive 2009/125/EC establishing flicker limits: PstLM ≤ 1 and SVM ≤ 0.4.

Passive temperature management: heat dissipation flows through the fixture body itself.

Ground mounted by two fixing holes. Supplied with aluminium insertion tube as standard.

Double cable gland entry for installation in series.

Pre-wiring of 0.5 metres cable 3x1mm².

IP68 connector to be ordered separately [reference F3.A3 (On/Off) / F3.A5 (DALI)].

Luminaire luminous flux: 195lm

Luminaire connected power: 17,1 W

Luminaire efficiency: 11 lm/W

Light source luminous flux: 2785lm

Light source power: 15,43 W

Constant Current: 500 mA

CRI: >80

Colour Temperature: 2700K

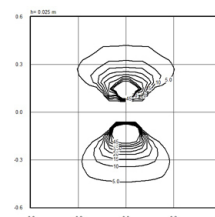
Chromaticity Tolerance: MacAdam 3

LOR: 7%

LED reliability at nominal Ta = 25°C: 100.000h L90B10

Photobiological safety group: 1

This product contains a light source of energy efficiency class D



Electronic Equipment

S: On/Off (AC/DC, NOT looping through capable)

D: DALI-2/switchDIM/corridorFUNCTION

B: Bluetooth-Casambi [10m]

*Add the suffix **-S**, **-D**, **-B** after the reference to indicate your electronic equipment choice.

Finishes

1: RAL9010: Pure White textured, **2:** RAL9005: Jet Black textured, **4:** RAL7016: Anthracite Grey textured, **7:** RAL9006: White Aluminium textured, **80 Corten:**, **90:** RAL6005 Moss Green textured

Upgradeable, Replaceable, Repairable



Note

LED technology and performance data are constantly changing. Current details should therefore be checked with ROVASI in order to ensure that it is still the most up to date reference. Updated data will be supplied on request. [Last revised on 16.08.2025]

5 years guarantee



BSI Cert ISO 9001:2015 - n°FM 39346

BSI Cert ISO 14001:2015 - n°EMS 554685

ROVASI S.L.

Ronda de la Font Grossa, 15
Pol. Ind. La Gavarra
08540 Centelles | Barcelona
Spain

Contact

T. +34 93 881 35 12 info@rovasi.com
T. +34 93 881 37 13 www.rovasi.com