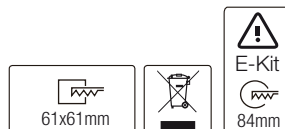
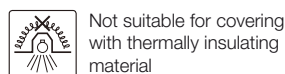
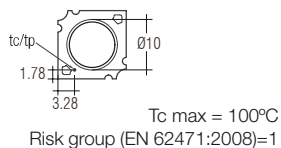
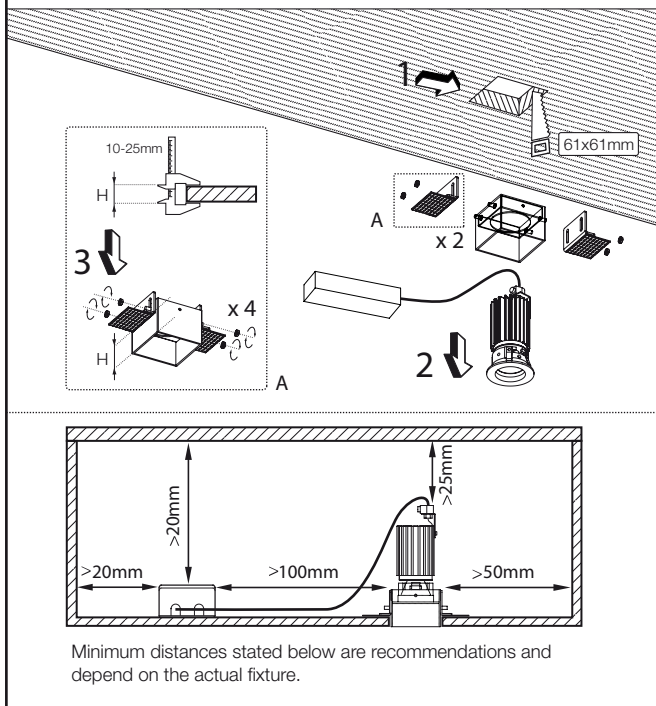


INSTALLATION INSTRUCTIONS



NOTES AND SAFETY INSTRUCTIONS

General safety instructions: information on restrictions related to use of the light fixtures (class, IP, etc.) can be found both on the fixture label and on our website at www.rovasi.com.

The wiring schematics can be found on page 2 of the document.

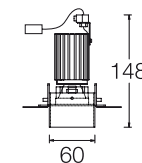
Equipament electrònic:

S: ON / OFF
D: DALI/DSI/switchDIM/corridorFUNCTION
SE: ON / OFF + Emergency-Kit [class I]
DE: DALI/DSI/SwitchDIM/corridorFUNCTION+E-Kit [class I]
DDE: DALI/DSI/SwitchDIM/corridorFUNCTION+E-Kit (DALI) [class I]

* Add any of the above suffixes after the reference to indicate your electronic equipment choice.

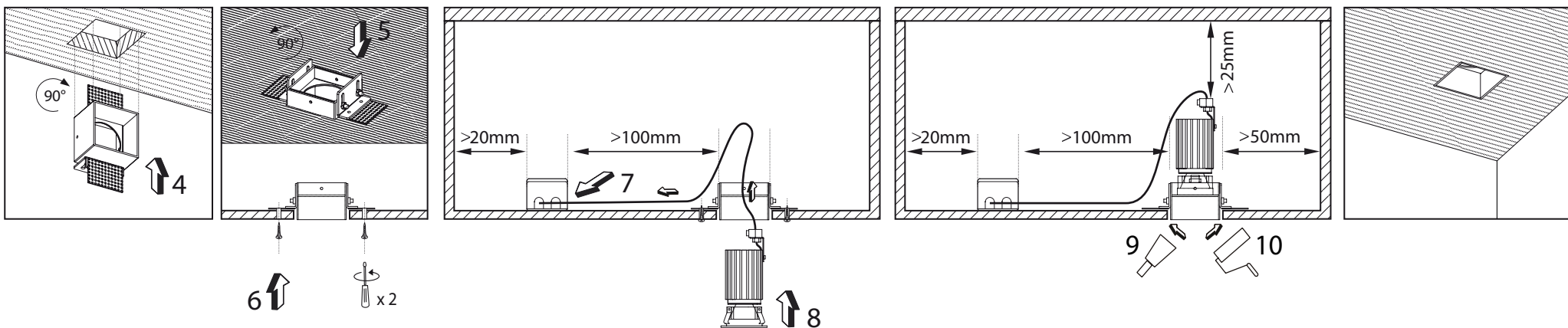
ACCESSORIES

+IP	IP44
	M2.A0035



4,7W / 150mA

101CXS-R709
 101CXS-R710
 101CXS-R711
 102CXS-R709
 102CXS-R710
 102CXS-R711
 103CXS-R709
 103CXS-R710
 103CXS-R711



LED technology and performance data are constantly changing. Current details should therefore be checked with ROVASI in order to ensure that it is still the most up to date reference. Updated data will be supplied on request. [09.05.2018]