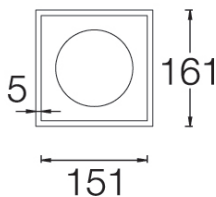
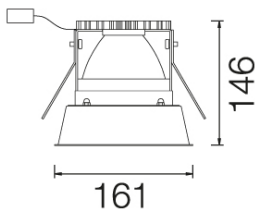
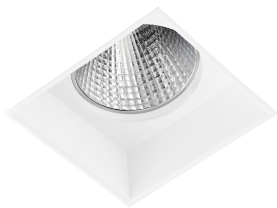
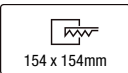


BSQ OPTIMAL DISPLAY

Trimless appearance recessed downlights



103BSQ.1-R696



Recessed ceiling-mounted downlight with symmetrical light distribution to achieve an effective task, accent or ambient lighting.

Square design with frameless appearance in 161mm x 161mm.

Aluminium interior frame powder painted in assorted finishes, customized RAL under request.

To complete the effect of this fixture, it is suggested that the interior frame be painted the same RAL colour as the ceiling.

Aluminium interior reflector available in assorted finishes: faceted metalized or sandblasted metalized depending on the beam angle outcome.

Accessory available to increase the protection rating to IP44 from underneath [reference M2.A0161].

Remote driver supplied. LED module for special applications.

Electronic options for lighting control: DALI-2.

Passive temperature management: heat dissipation flows through aluminium heat sink.

Ceiling-mounted using galvanised steel support with screws.

Luminaire luminous flux: 2111lm

Luminaire connected power: 18,33 W

Light source luminous flux: 2320lm

Light source power: 17 W

Constant Current: 500 mA

CRI: >90

Colour Temperature: FISH

Chromaticity Tolerance: MacAdam 3

Beam Angle: 12°

LOR: 91%

Average Service Life: 50000h

LED reliability: 51000h L80B10

UGR: 16

Photobiological safety group: 1

Cd/Klm: 9093

This product contains a light source of energy efficiency class E

Electronic Equipment

K: On/Off (basic)

S: On/Off (AC/DC + looping through)

SE: On/Off (AC/DC+looping) + 3h battery

D: DALI-2/switchDIM/corridorFUNCTION

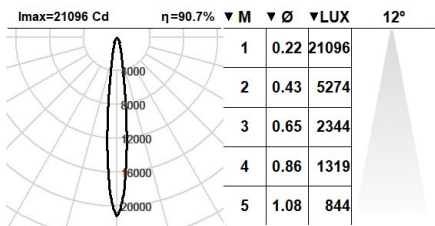
DE: DALI-2/switchDIM/corridorFUNCTION + Battery 3h

B: Bluetooth-Casambi

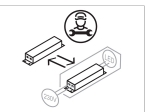
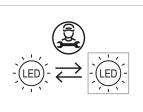
*Add the suffix **-K, -S, -SE, -D, -DE, -B** after the reference to indicate your electronic equipment choice.

Finishes

2: RAL9005: Jet Black, **4:** RAL7016: Anthracite Grey, **7:** RAL9006: White Aluminium, **1:** RAL9010: Pure White



Upgradeable, Replaceable, Repairable



Note

LED technology and performance data are constantly changing. Current details should therefore be checked with ROVASI in order to ensure that it is still the most up to date reference. Updated data will be supplied on request. [Last revised on 07.05.2024]

5 years guarantee



BSI Cert ISO 9001:2015 - n°FM 39346

BSI Cert ISO 14001:2015 - n°EMS 554685

ROVASI S.L.

Ronda de la Font Grossa, 15
Pol. Ind. La Gavarra
08540 Centelles | Barcelona
Spain

Contact

T. +34 93 881 35 12 info@rovasi.com
T. +34 93 881 37 13 www.rovasi.com