

102EFF.1.04-R882



Recessed ceiling-mounted downlight with symmetrical light distribution to achieve an effective general lighting.

Circular design in a diameter of 240mm.

Metalized aluminium reflectors. Interior reflector: sandblasted. Exterior reflector: specular.

Double die-cast aluminium trim and glass diffuser with internal reflector to direct the light.

Powder painted die-cast aluminium trim available in assorted various, customized RAL under request.

Flush painted glass diffuser easily attached to the reflector.

Tridonic remote driver supplied.

Electronic options for lighting control: DALI-2.

The driver contained in this luminaire complies with European Directive 2009/125/EC establishing flicker limits: PstLM ≤ 1 and SVM ≤ 0.4 .

3 hours battery available as option (class I).

Passive temperature management: heat dissipation flows through aluminium heat sink.

Ceiling-mounted using galvanised steel support with screws, ceiling thickness up to 30mm.

Luminaire luminous flux: 2355lm

Luminaire connected power: 25.33 W

Luminaire efficiency: 93 lm/W

Light source luminous flux: 4060lm

Light source power: 23 W

Constant Current: 700 mA

CRI: >80

Colour Temperature: 3000K

Chromaticity Tolerance: MacAdam 3

Beam Angle: 24°

LOR: 58%

Average Service Life: 50000h

LED reliability: 50000h L90B10

UGR: <19

Photobiological safety group: 1

Cd/Klm: 1779

Imax: 7223 Cd

This product contains a light source of energy efficiency class D

Electronic Equipment

K: On/Off (basic)

S: On/Off (AC/DC + looping through)

SE: On/Off (AC/DC+looping) + 3h battery

D: DALI-2/switchDIM/corridorFUNCTION

DE: DALI-2/switchDIM/corridorFUNCTION + Battery 3h

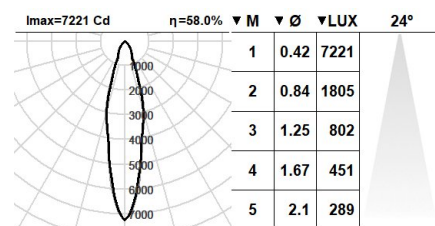
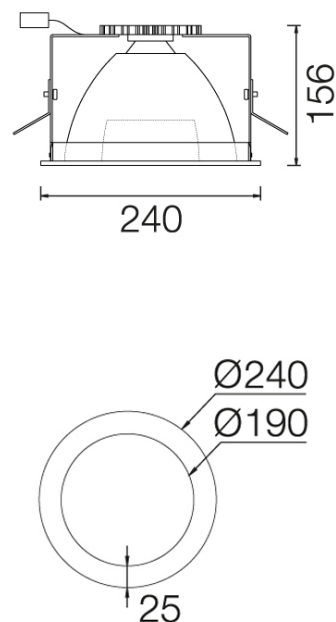
B: Bluetooth-Casambi

*Add the suffix **-K, -S, -SE, -D, -DE, -B** after the reference to indicate your electronic equipment choice.

Finishes

4: RAL7016: Anthracite Grey, **1:** RAL9010: Pure White, **2:** RAL9005: Jet Black, **7:** RAL9006: White Aluminium

Upgradeable, Replaceable, Repairable



Note

LED technology and performance data are constantly changing. Current details should therefore be checked with ROVASI in order to ensure that it is still the most up to date reference. Updated data will be supplied on request. [Last revised on 09.05.2025]

5 years guarantee



BSI Cert ISO 9001:2015 - n°FM 39346

BSI Cert ISO 14001:2015 - n°EMS 554685

ROVASI S.L.

Ronda de la Font Grossa, 15
Pol. Ind. La Gavarra
08540 Centelles | Barcelona
Spain

Contact

T. +34 93 881 35 12 info@rovasi.com
T. +34 93 881 37 13 www.rovasi.com