

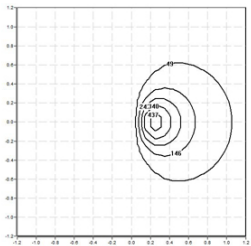


120KRM.4-I723



Bollard with frontal light emission, symmetrical distribution.  
Bollard height 675mm.  
Protection rating against dust and moisture: IP66 – full protection.  
Protection rating for resistance against harmful mechanical impacts: IK10.  
Extruded aluminium profile coated with polyester powder along with C4 treatment for corrosion resistance to guarantee further durability. Textured paint finish. Different RAL colour finishes available under request. C5-M special coating for highly corrosive environments is available under request.  
4mm frontal polycarbonate diffuser.  
Interior opal diffuser.  
Anticondensation device.  
Silicone gasket.  
Highly efficient linear printed circuit board.  
Built-in driver included. Ambient temperature: up to 50°C.  
Electronic options for light control: DALI-2.  
A4 stainless steel locking screw. Optional supply of A2 stainless steel vandal-resistant screws.  
IP68 connector not included, it can be ordered separately: F3.A3 (On/Off) / F3.A5 (DALI).  
Pre-wiring of 35cm cable 3x1mm2.  
Mounting plate for floor installation supplied with the fixture.  
Accessory for concrete installation reference F3.P1.KRM.  
Accessory for grass installation reference F3.O1.KRM.

**Luminaire luminous flux:** 525lm  
**Luminaire connected power:** 7.1 W  
**Luminaire efficiency:** 74 lm/W  
**Light source luminous flux:** 1165lm  
**Light source power:** 6 W  
**Constant Current:** 150 mA  
**CRI:** 80  
**Colour Temperature:** 2700K  
**Chromaticity Tolerance:** MacAdam 3  
**Beam Angle:** 91°  
**LOR:** 45%  
**Average Service Life:** 50000h  
**LED reliability:** >60000h L80B10  
**Photobiological safety group:** 1  
**This product contains a light source of energy efficiency class D**

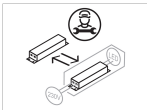
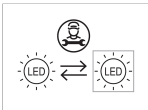


**Electronic Equipment**  
**S:** On/Off (AC/DC)  
**D:** DALI-2/switchDIM/corridorFUNCTION  
**B:** Bluetooth-Casambi

\*Add the suffix **-S, -D, -B** after the reference to indicate your electronic equipment choice.

**Finishes**  
**1:** RAL9010: Pure White textured, **2:** RAL9005: Jet Black textured, **4:** RAL7016: Anthracite Grey textured, **7:** RAL9006: White Aluminium textured

Upgradeable, Replaceable, Repairable



Note

LED technology and performance data are constantly changing. Current details should therefore be checked with ROVASI in order to ensure that it is still the most up to date reference. Updated data will be supplied on request. [Last revised on 17.05.2024]

5 years guarantee



BSI Cert ISO 9001:2015 - n°FM 39346  
BSI Cert ISO 14001:2015 - n°EMS 554685

**ROVASI S.L.**  
Ronda de la Font Grossa, 15  
Pol. Ind. La Gavarra  
08540 Centelles | Barcelona  
Spain

**Contact**  
T. +34 93 881 35 12 info@rovasi.com  
T. +34 93 881 37 13 www.rovasi.com