

Mounting screws not included.

**General safety instructions:** information on restrictions related to use of the light fixtures (class, IP, etc), can be found both on the fixture label and on our website at [www.rovasi.com](http://www.rovasi.com).

The wiring schematics can be found on page 2 of the document.

**ELECTRONIC EQUIPMENT:**

**T:** SwitchDIM/ColourSwitch/DALI/DSI. There are available accessories for dimming devices.

**Technical Data:**

59.9W / 250mA

110KUU.1.02-I721

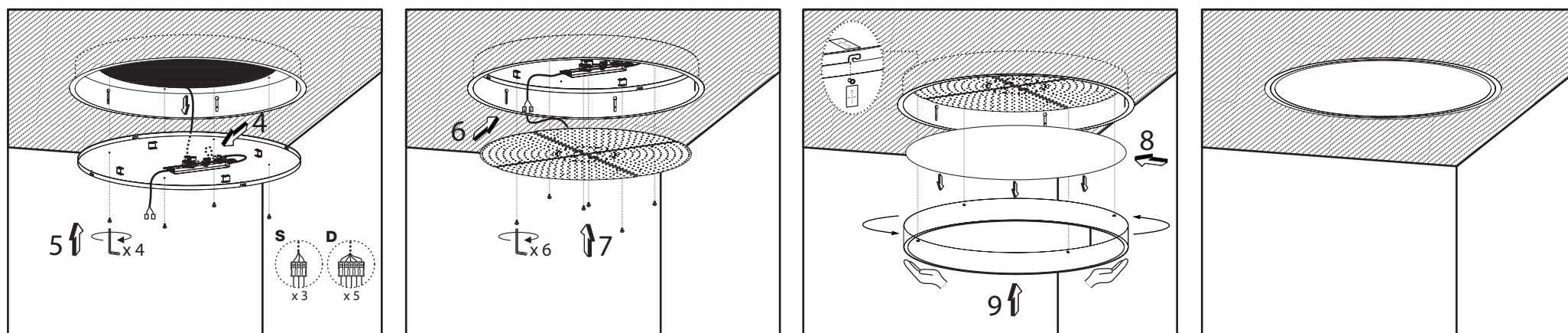
**Installation cable must support 110°C temperature. Feeding cable must be cable pipe 3x1 mm². Installation may require advice.**

**Not suitable for covering with thermally insulating material.**

**Do not accumulate excess of cable into the fixture.**

**Attention: We do recommend being installed by two people for proper safety.**

**Dimensions:** 396mm, 880mm, 21mm, 90mm.



This product contains a light source of energy efficiency class D.

LED technology and performance data are constantly changing. Current details should therefore be checked with ROVASI in order to ensure that its still the mostup to date reference. Updated data will be supplied on request. [31.10.2023]

# WIRING GUIDELINES

## Installation instructions. Mains supply wires

- Wiring type and cross section
- Use one wire for each terminal connector only.
- Use each strain relief channel for one cable only.
- Installation may require advice from a qualified person.
- Single lights apt for inner use (no outer)

## Wiring guidelines

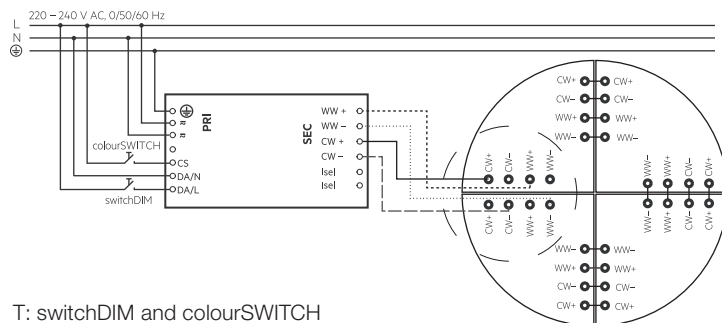
- The cables should be run separately from the mains connections and mains cables to ensure good EMC.
- The LED wiring should be kept as short as possible to ensure good EMC.
- The max. secondary cable length is 2m (4m circuit).
- Secondary switching is not permitted.
- Incorrect wiring can damage LED modules.

Loose wire through twisting and pulling or using a 1mm release tool.



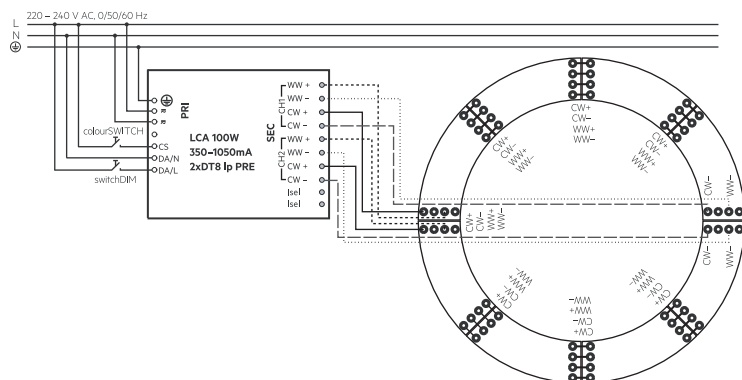
T: switchDIM and colourSWITCH

Wiring diagram for switchDIM and colourSWITCH for CLE 261 PRE2/ CLE 401 PRE2



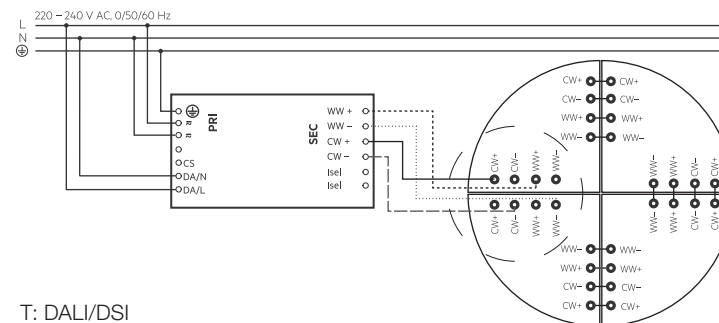
T: switchDIM and colourSWITCH

Wiring diagram for switchDIM and colourSWITCH for CLE541 PRE2



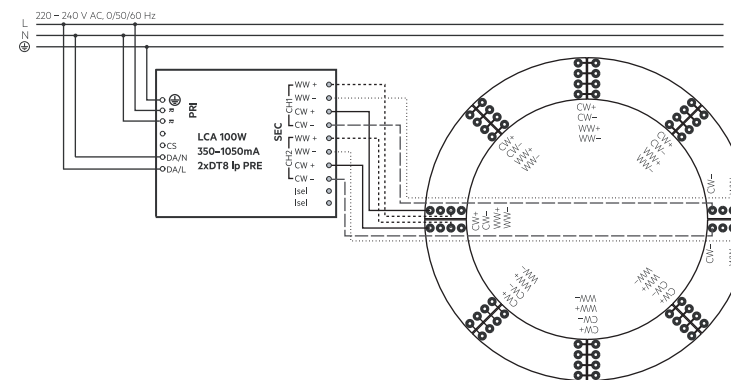
T: DALI/DSI

Wiring diagram for DALI/DSI for CLE 261 PRE2/ CLE 401 PRE2



T: DALI/DSI

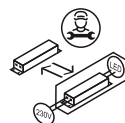
Wiring diagram for DALI/DSI for CLE 541 PRE2



## UPGRADEABLE, EPLACEABLE, REPAIRABLE



The light source in this luminaire should only be undertaken by the manufacturer or his service agent or a similar qualified person.



The servicing of the driver in this luminaire should only be undertaken by the manufacturer or his service agent or a similar qualified person.

