

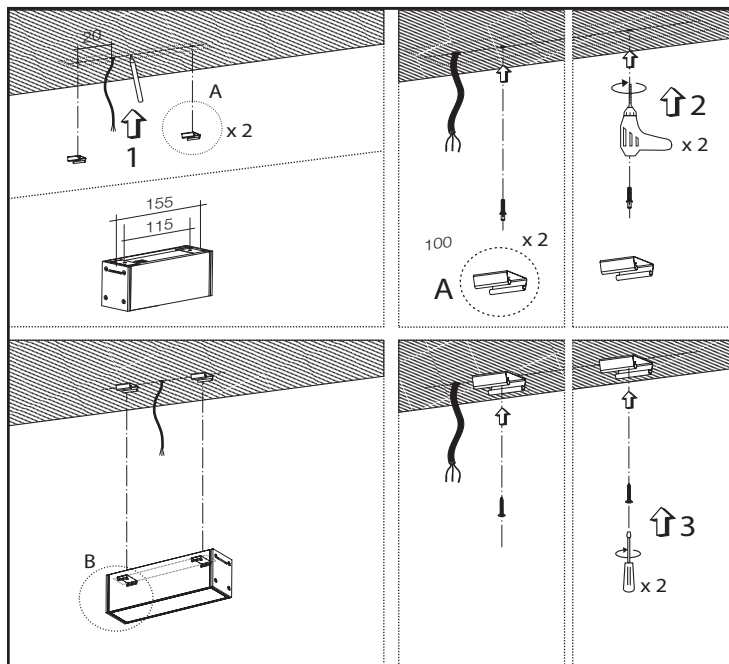
# District XS 300

IP66 Surface mounted linear downlights

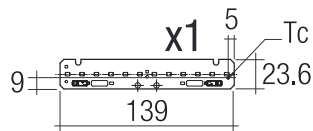
## INSTALLATION INSTRUCTIONS

# ROVASI

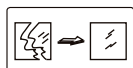
Positive Lighting



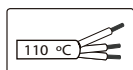
Recommended accessory IP68 junction box F3.A3



Tc max=85°C Risk group(EN 62471:2008)=1



Fitting must only be used complete with their protection cover. Tempered safety glass or polycarbonate cover of dimensions 141x52,5 mm and 4 mm thickness.



Installation cable must support 110°C temperature. Feeding cable must be cable pipe 3x1 mm². Installation may require advice.



General safety instructions: information on restrictions related to use of the light fixtures (class, IP, etc), can be found both on the fixture label and on our website at [www.rovasi.com](http://www.rovasi.com).

The wiring schematics can be found on page 2 of the document.

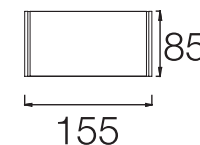
### ELECTRONIC EQUIPMENT:

**S:** On/Off.

### ACCESSORIES

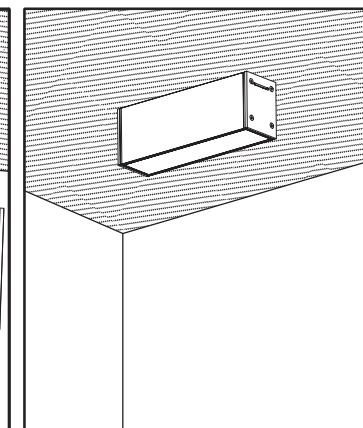
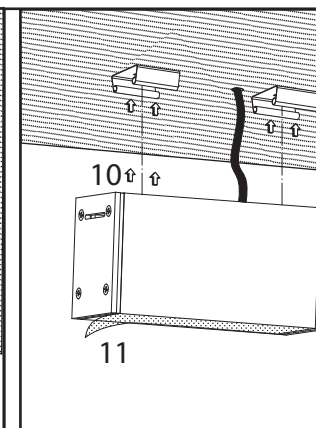
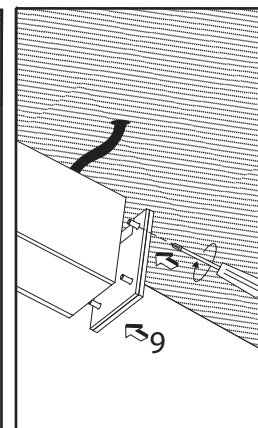
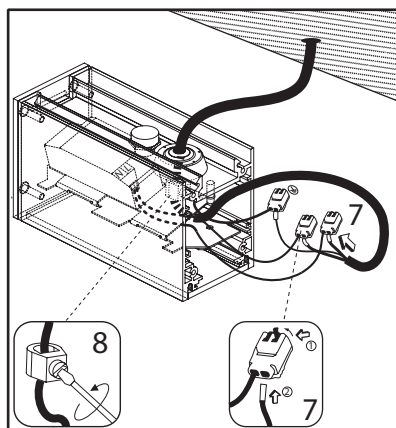
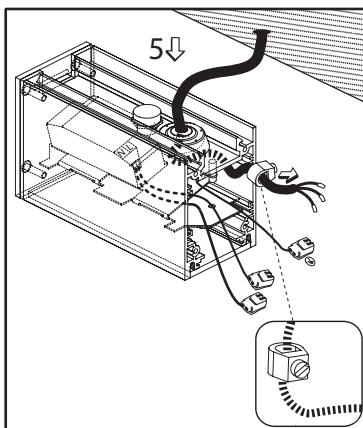
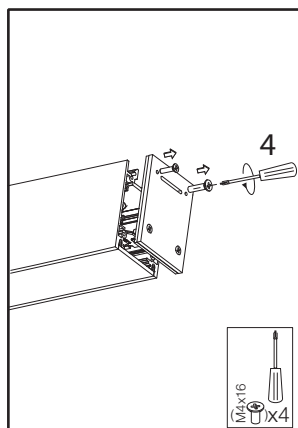


**F3.A3**  
On/Off



4.43W / 250mA

354DSX.4.01-I1118  
354DSX.4.01-I1119



This product contains a light source of energy efficiency class C.

LED technology and performance data are constantly changing. Current details should therefore be checked with ROVASI in order to ensure that its still the mostup to date reference. Updated data will be supplied on request. [14.09.2023]



BSI Cert ISO 9001:2015 - n°FM 39346  
BSI Cert ISO 14001:2015 - n°EMS 554685

Ronda de la Font-Grossa 15  
Pol. Ind. La Gavarra  
08540 Centelles | Barcelona  
Spain

T. 34 93 881 35 12  
T. 34 93 881 37 13

info@rovasi.com  
**rovasi.com**

## WIRING GUIDELINES

### Installation instructions. Mains supply wires

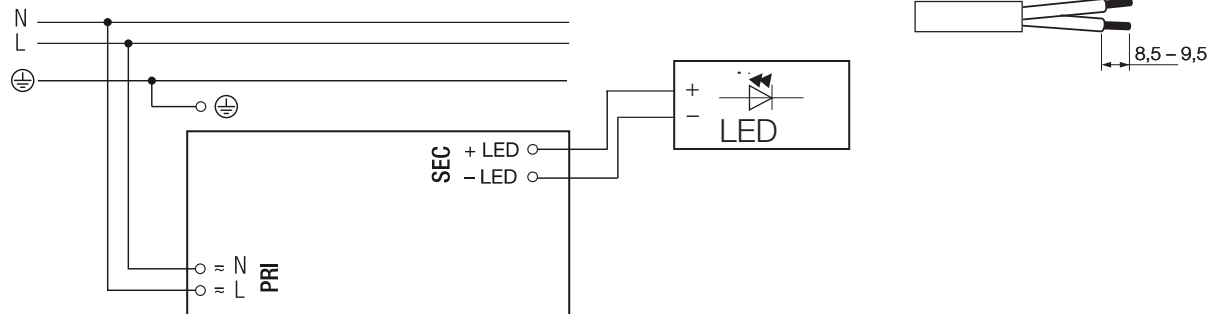
- Wiring type and cross section
- Solid wire a cross section of 1.5mm<sup>2</sup>. Strip 8,5-9,5 mm of insulation from the cables to ensure perfect operation of terminals.
- Use one wire for each terminal connector only.
- Use each strain relief channel for one cable only.
- Installation may require advice from a qualified person.
- Single lights apt for indoor and outdoor use.

### Wiring guidelines

- Cable length is 190mm.
- Short circuit, overload, open circuit and thermal protection.

Wiring diagram S: On/Off

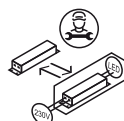
220-240V  
50/60 Hz



## UPGRADEABLE, REPLACEABLE, REPAIRABLE

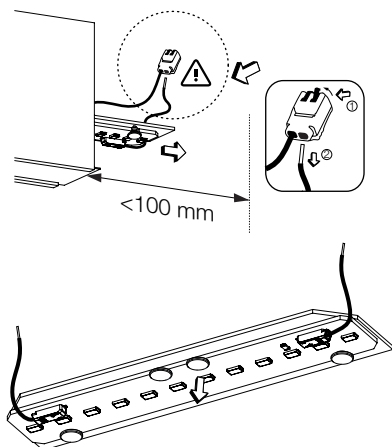


The light source contained in this luminaire shall only be replaced by the manufacturer or his service agent or a similar qualified person.

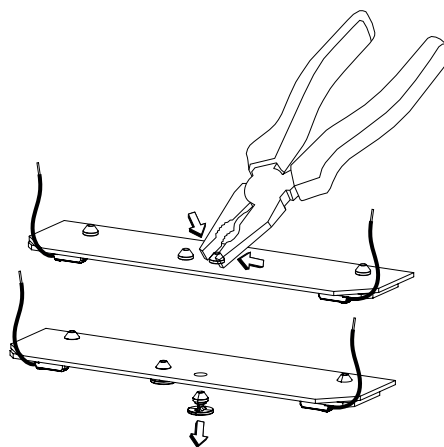


The driver contained in this luminaire shall only be replaced by the manufacturer or his service agent or a similar qualified person.

1



2



3

