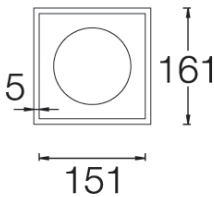
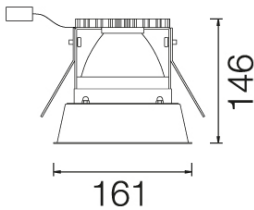
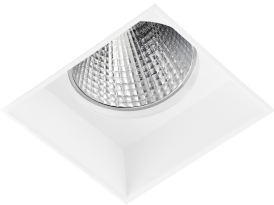


# BSQ OPTIMAL DISPLAY

Trimless appearance recessed downlights



## 103BSQ.1-R1149



Recessed ceiling-mounted downlight with symmetrical light distribution to achieve an effective task, accent or ambient lighting.

Square design with frameless appearance in 161mm x 161mm.

Aluminium interior frame powder painted in assorted finishes, customized RAL under request.

To complete the effect of this fixture, it is suggested that the interior frame be painted the same RAL colour as the ceiling.

Aluminium interior reflector available in assorted finishes: faceted metalized or sandblasted metalized depending on the beam angle outcome.

Accessory available to increase the protection rating to IP44 from underneath [reference M2.A0161].

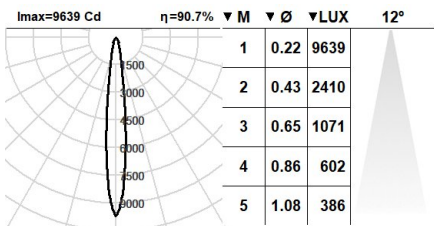
Remote driver supplied. LED module for special applications.

Electronic options for lighting control: DALI-2.

Passive temperature management: heat dissipation flows through aluminium heat sink.

Ceiling-mounted using galvanised steel support with screws.

**Luminaire luminous flux:** 964lm  
**Luminaire connected power:** 12.61 W  
**Light source luminous flux:** 1060lm  
**Light source power:** 11 W  
**Constant Current:** 350 mA  
**CRI:** >90  
**Colour Temperature:** FRESH MEAT  
**Chromaticity Tolerance:** MacAdam 4  
**Beam Angle:** 12°  
**LOR:** 91%  
**Average Service Life:** 50000h  
**LED reliability:** 51000h L80B10  
**UGR:** 16  
**Photobiological safety group:** 1  
**Cd/Klm:** 9093



### Electronic Equipment

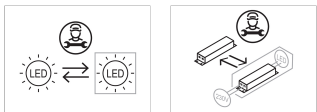
**K:** On/Off (basic)  
**S:** On/Off (AC/DC + looping through)  
**SE:** On/Off (AC/DC+looping) + 3h battery  
**D:** DALI-2/switchDIM/corridorFUNCTION  
**DE:** DALI-2/switchDIM/corridorFUNCTION + Battery 3h  
**B:** Bluetooth-Casambi

\*Add the suffix **-K, -S, -SE, -D, -DE, -B** after the reference to indicate your electronic equipment choice.

### Finishes

**2:** RAL9005: Jet Black, **4:** RAL7016: Anthracite Grey, **7:** RAL9006: White Aluminium, **1:** RAL9010: Pure White

### Upgradeable, Replaceable, Repairable



Note

LED technology and performance data are constantly changing. Current details should therefore be checked with ROVASI in order to ensure that it is still the most up to date reference. Updated data will be supplied on request. [Last revised on 07.05.2024]

5 years guarantee



BSI Cert ISO 9001:2015 - n°FM 39346  
BSI Cert ISO 14001:2015 - n°EMS 554685

### ROVASI S.L.

Ronda de la Font Grossa, 15  
Pol. Ind. La Gavarra  
08540 Centelles | Barcelona  
Spain

### Contact

T. +34 93 881 35 12 info@rovasi.com  
T. +34 93 881 37 13 www.rovasi.com