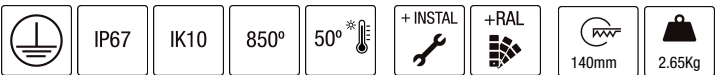
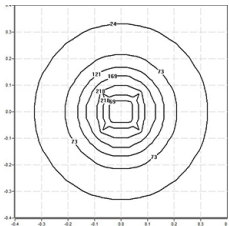


101BLT.4-I1104



Semi-recessed buried fixture with 360° light emission, radial beam to achieve an effective ground illumination.  
Circular design available in a diameter of 140mm.  
Protection rating against dust and moisture: complete IP67.  
Protection rating for resistance to harmful mechanical impacts: IK10.  
Robust and corrosion-resistant because of its black painted die-cast aluminium housing with C5-M special coating for environments with very high corrosivity.  
Cover made of die-cast aluminium treated against corrosion and coated with polyester powder available in several colour finishes, customized RAL under request.  
5mm extruded polycarbonate diffuser made by resins UV stabilized. Opal finish.  
Temperature resistant silicone rubber gasket.  
Built-in driver, included. Ambient temperature up to 50°C.  
Electronic standard options for lighting control: DALI-2.  
The driver contained in this luminaire complies with European Directive 2009/125/EC establishing flicker limits: PstLM ≤ 1 and SVM ≤ 0.4.  
Passive temperature management: heat dissipation flows through the fixture body itself.  
Supplied with aluminium insertion tube as standard.  
Ground mounted by two fixing holes.  
Pre-wiring of 0.5 metres cable 3x1mm<sup>2</sup>.  
IP68 connector not included, it can be ordered separately: F3.A3. (On/Off) / F3.A5. (DALI).

**Luminaire luminous flux:** 76lm  
**Luminaire connected power:** 7.2 W  
**Light source luminous flux:** 1140lm  
**Light source power:** 7.2 W  
**Constant Current:** 350 mA  
**CRI:** 80  
**Colour Temperature:** 4000K  
**Chromaticity Tolerance:** MacAdam 4  
**Average Service Life:** 50000h  
**LED reliability:** 52000h L80B50  
**Photobiological safety group:** 1  
**This product contains a light source of energy efficiency class E**



**Electronic Equipment**  
**S:** On/Off  
**D:** DALI-2/switchDIM/corridorFUNCTION

\*Add the suffix **-S**, **-D** after the reference to indicate your electronic equipment choice.

**Finishes**  
**1:** RAL9010: Pure White textured, **2:** RAL9005: Jet Black textured, **4:** RAL7016: Anthracite Grey textured, **7:** RAL9006: White Aluminium textured

Upgradeable, Replaceable, Repairable



Note

LED technology and performance data are constantly changing. Current details should therefore be checked with ROVASI in order to ensure that it is still the most up to date reference. Updated data will be supplied on request. [Last revised on 18.05.2024]

5 years guarantee



BSI Cert ISO 9001:2015 - n°FM 39346  
BSI Cert ISO 14001:2015 - n°EMS 554685

**ROVASI S.L.**  
Ronda de la Font Grossa, 15  
Pol. Ind. La Gavarra  
08540 Centelles | Barcelona  
Spain

**Contact**  
T. +34 93 881 35 12    info@rovasi.com  
T. +34 93 881 37 13    [www.rovasi.com](http://www.rovasi.com)