

## 220KXS.4-I1417



Bollard with frontal light emission, symmetrical distribution.  
Bollard height 240mm with 60° inclination from the horizontal axis.  
Protection rating against dust and moisture: complete IP66.  
Protection rating for resistance to harmful mechanical impacts: IK10.  
Extruded aluminium profile coated with polyester powder along with C4 treatment for corrosion resistance to guarantee further durability. Textured paint finish. Different RAL colour finishes available under request. C5-M special coating for highly corrosive environments is available under request.  
A4 stainless steel locking screw. Optional A2 stainless steel vandal-proof screw.  
Highly efficient linear printed circuit board.  
Protection polycarbonate diffuser in 4mm.  
Interior opal diffuser.  
Silicone gasket.  
Built-in driver included.  
Electronic options for lighting control: DALI-2.  
The driver contained in this luminaire complies with European Directive 2009/125/EC establishing flicker limits: PstLM ≤ 1 and SVM ≤ 0.4.  
IP67 venting valve to reduce condensation.  
IP68 connector not included, it can be ordered separately: F3.A3.  
Pre-wiring of 35cm cable 3x1mm<sup>2</sup>.  
Mounting plate for floor installation supplied with the fixture.  
Accessory for concrete installation reference F3.P1.KRM.  
Accessory for grass installation reference F3.P1.KRM.

**Luminaire luminous flux:** 331lm  
**Luminaire connected power:** 6,37 W  
**Luminaire efficiency:** 52 lm/W  
**Light source luminous flux:** 730lm  
**Light source power:** 3,85 W  
**Constant Current:** 350 mA  
**CRI:** >80  
**Colour Temperature:** 5000K  
**Chromaticity Tolerance:** MacAdam 3  
**Beam Angle:** 100°

**LOR:** 45%  
**LED reliability at nominal Ta = 25°C:** 100.000h L80B10  
**Photobiological safety group:** 1  
**This product contains a light source of energy efficiency class B**

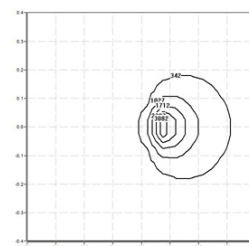
### Electronic Equipment

**S:** On/Off  
**D:** DALI-2/switchDIM

\*Add the suffix **-S**, **-D** after the reference to indicate your electronic equipment choice.

### Finishes

**1:** RAL9010: Pure White textured, **2:** RAL9005: Jet Black textured, **4:** RAL7016: Anthracite Grey textured, **7:** RAL9006: White Aluminium textured, **80 Corten:**, **90:** RAL6005 Moss Green textured



### Upgradeable, Replaceable, Repairable



### Note

LED technology and performance data are constantly changing. Current details should therefore be checked with ROVASI in order to ensure that it is still the most up to date reference. Updated data will be supplied on request. [Last revised on 29.07.2025]

### 5 years guarantee



BSI Cert ISO 9001:2015 - n°FM 39346  
BSI Cert ISO 14001:2015 - n°EMS 554685

### ROVASI S.L.

Ronda de la Font Grossa, 15  
Pol. Ind. La Gavarra  
08540 Centelles | Barcelona  
Spain

### Contact

T. +34 93 881 35 12 info@rovasi.com  
T. +34 93 881 37 13 **www.rovasi.com**