



## 130UND.4-I1106



Bollard with 360° light emission, radial beam.

Bollard head with a diameter of 140mm.

Bollard height : 300mm.

Protection rating against dust and moisture: IP66 – full protection.

Protection rating for resistance against harmful mechanical impacts: IK10.

Die-cast aluminium body and top cover made of die-cast aluminium and extruded aluminium tube coated with polyester powder along with C4 treatment for corrosion resistance to guarantee further durability.

Textured paint finish. Different RAL colour finishes available under request. C5-M special coating for highly corrosive environments is available under request.

5mm extruded polycarbonate diffuser made by resins UV stabilized. Opal finish.

A4 stainless steel locking screw. Optional supply of A2 stainless steel vandal-resistant screw.

Silicone gasket.

Anticondensation device.

PCB on the top of the fixture.

Built-in driver included. Ambient temperature: up to 50°C.

Electronic options for light control : DALI.

Pre-wiring with 25cm of 3x1mm<sup>2</sup> cable.

Double cable gland entry for installation in series.

IP68 connector not included, it can be ordered separately: F3.A3 (On/Off) / F3.A5 (DALI) Mounting base supplied with the fixture.

Accessory for installation in concrete reference F3.P1.BLD

Accessory for installation in grass reference F3.O1.BLD

**Light source power:** 10.6 W

**Fixture power:** 10.6 W

**Constant Current:** 500 mA

**Luminous flux of the light source:** 1550lm

**Luminous flux of the fixture:** 682lm

**CRI:** 80

**Colour Temperature:** 4000K

**Chromaticity Tolerance:** MacAdam 4

**Beam Angle:** 360°

**LOR:** 44%

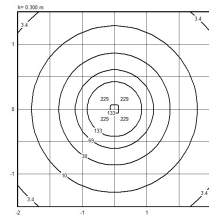
**Average Service Life:** 50000h

**LED reliability:** 52000h L80B50

**Photobiological safety group:** 1

**Luminous efficacy:** 64 lm/W

**This product contains a light source of energy efficiency class E**



### Electronic Equipment

**S:** On/Off

**D:** DALI-2/switchDIM/corridorFUNCTION

\*Add the suffix **-S**, **-D** after the reference to indicate your electronic equipment choice.

### Finishes

**1:** RAL9010: Pure White textured, **2:** RAL9005: Jet Black textured, **4:** RAL7016: Anthracite Grey textured, **7:** RAL9006: White Aluminium textured

### Upgradeable, Replaceable, Repairable



### Note

LED technology and performance data are constantly changing. Current details should therefore be checked with ROVASI in order to ensure that it is still the most up to date reference. Updated data will be supplied on request. [Last revised on 25.04.2024]

5 years guarantee



BSI Cert ISO 9001:2015 - n°FM 39346

BSI Cert ISO 14001:2015 - n°EMS 554685

### ROVASI S.L.

Ronda de la Font Grossa, 15  
Pol. Ind. La Gavarra  
08540 Centelles | Barcelona  
Spain

### Contact

T. +34 93 881 35 12 info@rovasi.com  
T. +34 93 881 37 13 [www.rovasi.com](http://www.rovasi.com)