



122KXS.4-I1136



Bollard with frontal light emission, symmetrical distribution.

Bollard height 395mm.

Protection rating against dust and moisture: complete IP66.

Protection rating for resistance to harmful mechanical impacts: IK10.

Extruded aluminium profile coated with polyester powder along with C4 treatment for corrosion resistance to guarantee further durability. Textured paint finish. Different RAL colour finishes available under request. C5-M special coating for highly corrosive environments is available under request.

A4 stainless steel locking screw. Optional A2 stainless steel vandal-proof screw.

Highly efficient linear printed circuit board.

Protection polycarbonate diffuser in 4mm.

Interior opal diffuser.

Silicone gasket.

Built-in driver: On|Off.

Anti-condensation device.

IP68 connector not included, it can be ordered separately: F3.A3.

Pre-wiring of 35cm cable 3x1mm².

Mounting plate for floor installation supplied with the fixture.

Accessory for concrete installation reference F3.P1.KRM.

Accessory for grass installation reference F3.P1.KRM.

Light source power: 7.8 W

Fixture power: 10.28 W

Constant Current: 350 mA

Luminous flux of the light source: 1455lm

Luminous flux of the fixture: 655lm

CRI: >80

Colour Temperature: 4000K

Chromaticity Tolerance: MacAdam 3

Beam Angle: 100°

LOR: 45%

Average Service Life: 50000h

LED reliability: >72000h L80B10

Photobiological safety group: 1

Luminous efficacy: 64 lm/W

This product contains a light source of energy efficiency class C

Electronic Equipment

S: On/Off

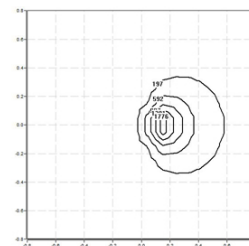
D: DALI-2/switchDIM

B: Bluetooth-Casambi

*Add the suffix **-S**, **-D**, **-B** after the reference to indicate your electronic equipment choice.

Finishes

1: RAL9010: Pure White textured, **2:** RAL9005: Jet Black textured, **4:** RAL7016: Anthracite Grey textured, **7:** RAL9006: White Aluminium textured



Upgradeable, Replaceable, Repairable



Note

LED technology and performance data are constantly changing. Current details should therefore be checked with ROVASI in order to ensure that it is still the most up to date reference. Updated data will be supplied on request. [Last revised on 23.04.2024]

5 years guarantee



BSI Cert ISO 9001:2015 - n°FM 39346

BSI Cert ISO 14001:2015 - n°EMS 554685

ROVASI S.L.

Ronda de la Font Grossa, 15
Pol. Ind. La Gavarra
08540 Centelles | Barcelona
Spain

Contact

T. +34 93 881 35 12 info@rovasi.com
T. +34 93 881 37 13 www.rovasi.com