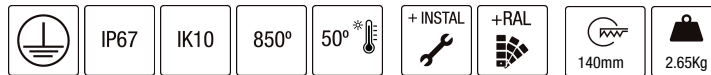


101BLT.4-I1106



Semi-recessed buried fixture with 360° light emission, radial beam to achieve an effective ground illumination.

Circular design available in a diameter of 140mm.

Protection rating against dust and moisture: complete IP67.

Protection rating for resistance to harmful mechanical impacts: IK10.

Robust and corrosion-resistant because of its black painted die-cast aluminium housing with C5-M special coating for environments with very high corrosivity.

Cover made of die-cast aluminium treated against corrosion and coated with polyester powder available in several colour finishes, customized RAL under request.

5mm extruded polycarbonate diffuser made by resins UV stabilized. Opal finish.

Temperature resistant silicone rubber gasket.

Built-in driver, included. Ambient temperature up to 50°C.

Electronic standard options for lighting control: DALI/DSI.

Passive temperature management: heat dissipation flows through the fixture body itself.

Supplied with aluminium insertion tube as standard.

Ground mounted by two fixing holes.

Pre-wiring of 0.5 metres cable 3x1mm².

IP68 connector not included, it can be ordered separately: F3.A3. (On/Off) / F3.A5. (DALI).

Light source power: 10.6 W

Fixture power: 10.6 W

Constant Current: 500 mA

Luminous flux of the light source: 1550lm

Luminous flux of the fixture: 104lm

CRI: 80

Colour Temperature: 4000K

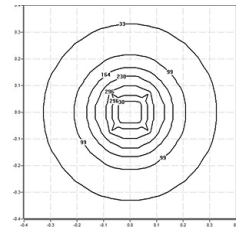
Chromaticity Tolerance: MacAdam 4

Average Service Life: 50000h

LED reliability: 52000h L80B50

Photobiological safety group: 1

This product contains a light source of energy efficiency class E

**Electronic Equipment**

S: On/Off

D: DALI-2/DSI switchDIM/corridorFUNCTION

*Add the suffix **-S**, **-D** after the reference to indicate your electronic equipment choice.

Finishes

1: RAL9010: Pure White textured, **2:** RAL9005: Jet Black textured, **4:** RAL7016: Anthracite Grey textured, **7:** RAL9006: White Aluminium textured

Upgradeable, Replaceable, Repairable

Note

LED technology and performance data are constantly changing. Current details should therefore be checked with ROVASI in order to ensure that it is still the most up to date reference. Updated data will be supplied on request. [Last revised on 19.04.2024]

5 years guarantee



BSI Cert ISO 9001:2015 - n°FM 39346

BSI Cert ISO 14001:2015 - n°EMS 554685

ROVASI S.L.

Ronda de la Font Grossa, 15
Pol. Ind. La Gavarra
08540 Centelles | Barcelona
Spain

Contact

T. +34 93 881 35 12
T. +34 93 881 37 13

info@rovasi.com
www.rovasi.com