

230GNS.4-I1174



Bollard with 360° light emission, radial beam.

Bollard head with a diameter of 140mm.

Bollard height : 300mm.

Protection rating against dust and moisture: IP66 – full protection.

Protection rating for resistance against harmful mechanical impacts: IK10.

Die-cast aluminium body and top cover made of die-cast aluminium and extruded aluminium tube coated with polyester powder along with C4 treatment for corrosion resistance to guarantee further durability.

Textured paint finish. Different RAL colour finishes available under request. C5-M special coating for highly corrosive environments is available under request.

5mm extruded polycarbonate diffuser made by resins UV stabilized. Clear finish.

White painted interior reflector to control the light and to create specific results.

A4 stainless steel locking screw. Optional supply of A2 stainless steel vandal-resistant screw.

Silicone gasket.

Anticondensation device.

PCB on the top of the fixture.

Built-in driver included. Ambient temperature: up to 50°C.

Electronic options for light control : DALI-2.

The driver contained in this luminaire complies with European Directive 2009/125/EC establishing flicker limits: $PstLM \leq 1$ and $SVM \leq 0.4$.

Pre-wiring with 25cm of 3x1mm² cable.

Double cable gland entry for installation in series.

IP68 connector not included, it can be ordered separately: F3.A3 (On/Off) / F3.A5 (DALI).

Mounting base supplied with the fixture.

Accessory for concrete installation reference F3.P1.BLD

Accessory for grass installation reference F3.O1.BLD

Luminaire luminous flux: 736lm

Luminaire connected power: 11 W

Luminaire efficiency: 67 lm/W

Light source luminous flux: 1098lm

Light source power: 11 W

Constant Current: 500 mA

CRI: 93

Colour Temperature: 2700K

Chromaticity Tolerance: MacAdam 4

Beam Angle: 360°

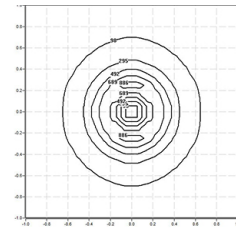
LOR: 67%

Average Service Life: 50000h

LED reliability: 52000h L80B50

Photobiological safety group: 1

This product contains a light source of energy efficiency class consult



Electronic Equipment

S: On/Off

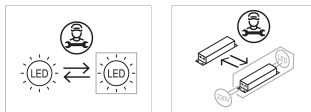
D: DALI-2/switchDIM/corridorFUNCTION

*Add the suffix **-S, -D** after the reference to indicate your electronic equipment choice.

Finishes

1: RAL9010: Pure White textured, **2:** RAL9005: Jet Black textured, **4:** RAL7016: Anthracite Grey textured, **7:** RAL9006: White Aluminium textured

Upgradeable, Replaceable, Repairable



Note

LED technology and performance data are constantly changing. Current details should therefore be checked with ROVASI in order to ensure that it is still the most up to date reference. Updated data will be supplied on request. [Last revised on 18.09.2024]

5 years guarantee



BSI Cert ISO 9001:2015 - n°FM 39346

BSI Cert ISO 14001:2015 - n°EMS 554685

ROVASI S.L.

Ronda de la Font Grossa, 15
Pol. Ind. La Gavarra
08540 Centelles | Barcelona
Spain

Contact

T. +34 93 881 35 12 info@rovasi.com
T. +34 93 881 37 13 www.rovasi.com